

**Anti-SDHC Rabbit Monoclonal Antibody**  
**Catalog # ABO16755****Specification**

---

**Anti-SDHC Rabbit Monoclonal Antibody - Product Information**

Application	WB, IHC
Primary Accession	<a href="#">Q99643</a>
Host	Rabbit
Isotype	Rabbit IgG
Reactivity	Rat, Human, Mouse
Clonality	Monoclonal
Format	Liquid

**Description**

Anti-SDHC Rabbit Monoclonal Antibody . Tested in WB, IHC applications. This antibody reacts with Human, Mouse, Rat.

**Anti-SDHC Rabbit Monoclonal Antibody - Additional Information**

**Gene ID** 6391

**Other Names**

Succinate dehydrogenase cytochrome b560 subunit, mitochondrial, Integral membrane protein CII-3, QPs-1, QPs1, Succinate dehydrogenase complex subunit C, Succinate-ubiquinone oxidoreductase cytochrome B large subunit, CYBL, SDHC, CYB560, SDH3

**Application Details**

WB 1:500-1:2000<br>IHC 1:50-1:200

**Contents**

Rabbit IgG in phosphate buffered saline, pH 7.4, 150mM NaCl, 0.02% sodium azide and 50% glycerol, 0.4-0.5mg/ml BSA.

**Immunogen**

A synthesized peptide derived from human SDHC

**Purification**

Affinity-chromatography

**Storage**

**Store at -20°C for one year. For short term storage and frequent use, store at 4°C for up to one month. Avoid repeated freeze-thaw cycles.**

**Anti-SDHC Rabbit Monoclonal Antibody - Protein Information**

**Name** SDHC

**Synonyms** CYB560, SDH3

### Function

Membrane-anchoring subunit of succinate dehydrogenase (SDH) that is involved in complex II of the mitochondrial electron transport chain and is responsible for transferring electrons from succinate to ubiquinone (coenzyme Q) (PubMed:<a href="http://www.uniprot.org/citations/9533030" target="\_blank">9533030</a>). SDH also oxidizes malate to the non-canonical enol form of oxaloacetate, enol-oxaloacetate (By similarity). Enol-oxaloacetate, which is a potent inhibitor of the succinate dehydrogenase activity, is further isomerized into keto- oxaloacetate (By similarity).

### Cellular Location

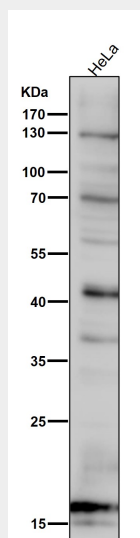
Mitochondrion inner membrane; Multi-pass membrane protein

### Anti-SDHC Rabbit Monoclonal Antibody - Protocols

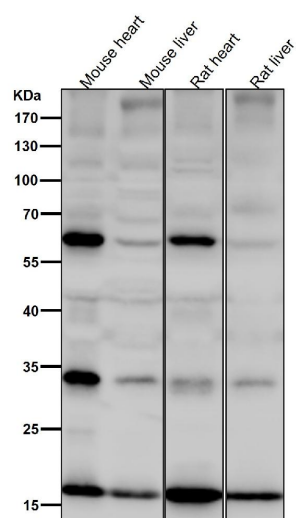
Provided below are standard protocols that you may find useful for product applications.

- [Western Blot](#)
- [Blocking Peptides](#)
- [Dot Blot](#)
- [Immunohistochemistry](#)
- [Immunofluorescence](#)
- [Immunoprecipitation](#)
- [Flow Cytometry](#)
- [Cell Culture](#)

### Anti-SDHC Rabbit Monoclonal Antibody - Images



All lanes use the Antibody at 1:6K dilution for 1 hour at room temperature.



All lanes use the Antibody at 1:6K dilution for 1 hour at room temperature.