

**Anti-NELFB Rabbit Monoclonal Antibody**  
**Catalog # ABO16809****Specification****Anti-NELFB Rabbit Monoclonal Antibody - Product Information**

Application	WB, IHC
Primary Accession	<a href="#">Q8WX92</a>
Host	Rabbit
Isotype	Rabbit IgG
Reactivity	Human
Clonality	Monoclonal
Format	Liquid

**Description**

Anti-NELFB Rabbit Monoclonal Antibody . Tested in WB, IHC, ICC/IF applications. This antibody reacts with Human.

**Anti-NELFB Rabbit Monoclonal Antibody - Additional Information**

**Gene ID** 25920

**Other Names**

Negative elongation factor B, NELF-B, Cofactor of BRCA1, NELFB, COBRA1  
{ECO:0000303|PubMed:11739404}, KIAA1182

**Application Details**

WB 1:500-1:2000<br>IHC 1:50-1:200<br>ICC/IF 1:50-1:200

**Contents**

Rabbit IgG in phosphate buffered saline, pH 7.4, 150mM NaCl, 0.02% sodium azide and 50% glycerol, 0.4-0.5mg/ml BSA.

**Immunogen**

A synthesized peptide derived from human NELFB

**Purification**

Affinity-chromatography

**Storage**

**Store at -20°C for one year. For short term storage and frequent use, store at 4°C for up to one month. Avoid repeated freeze-thaw cycles.**

**Anti-NELFB Rabbit Monoclonal Antibody - Protein Information**

**Name** NELFB

**Synonyms** COBRA1 {ECO:0000303|PubMed:11739404}, KI

### Function

Essential component of the NELF complex, a complex that negatively regulates the elongation of transcription by RNA polymerase II (PubMed:<a href="http://www.uniprot.org/citations/12612062" target="\_blank">12612062</a>). The NELF complex, which acts via an association with the DSIF complex and causes transcriptional pausing, is counteracted by the P-TEFb kinase complex (PubMed:<a href="http://www.uniprot.org/citations/10199401" target="\_blank">10199401</a>). May be able to induce chromatin unfolding (PubMed:<a href="http://www.uniprot.org/citations/11739404" target="\_blank">11739404</a>). Essential for early embryogenesis; plays an important role in maintaining the undifferentiated state of embryonic stem cells (ESCs) by preventing unscheduled expression of developmental genes (By similarity). Plays a key role in establishing the responsiveness of stem cells to developmental cues; facilitates plasticity and cell fate commitment in ESCs by establishing the appropriate expression level of signaling molecules (By similarity). Supports the transcription of genes involved in energy metabolism in cardiomyocytes; facilitates the association of transcription initiation factors with the promoters of the metabolism- related genes (By similarity).

### Cellular Location

Nucleus.

### Tissue Location

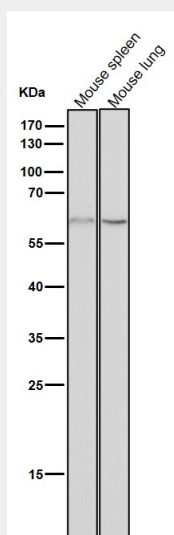
Widely expressed. Expressed in heart, brain, lung, placenta, liver, skeletal muscle, kidney and pancreas

### Anti-NELFB Rabbit Monoclonal Antibody - Protocols

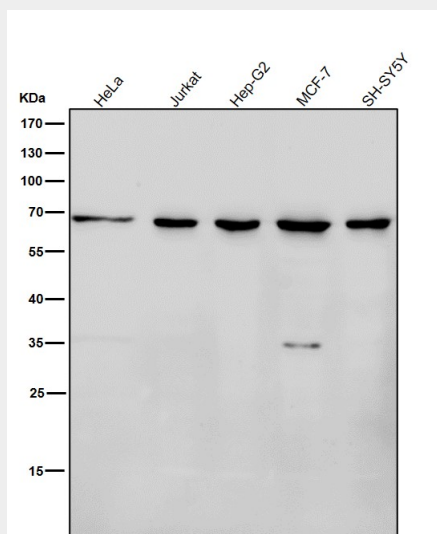
Provided below are standard protocols that you may find useful for product applications.

- [Western Blot](#)
- [Blocking Peptides](#)
- [Dot Blot](#)
- [Immunohistochemistry](#)
- [Immunofluorescence](#)
- [Immunoprecipitation](#)
- [Flow Cytometry](#)
- [Cell Culture](#)

### Anti-NELFB Rabbit Monoclonal Antibody - Images



All lanes use the Antibody at 1:3K dilution for 1 hour at room temperature.



All lanes use the Antibody at 1:3K dilution for 1 hour at room temperature.