

Anti-DCAF13 Rabbit Monoclonal Antibody
Catalog # ABO16814**Specification**

Anti-DCAF13 Rabbit Monoclonal Antibody - Product Information

Application	WB, IHC, IP
Primary Accession	Q9NV06
Host	Rabbit
Isotype	Rabbit IgG
Reactivity	Rat, Human, Mouse
Clonality	Monoclonal
Format	Liquid

Description

Anti-DCAF13 Rabbit Monoclonal Antibody . Tested in WB, IHC, IP applications. This antibody reacts with Human, Mouse, Rat.

Anti-DCAF13 Rabbit Monoclonal Antibody - Additional Information

Gene ID 25879

Other Names

DDB1- and CUL4-associated factor 13, WD repeat and SOF domain-containing protein 1, DCAF13 (http://www.genenames.org/cgi-bin/gene_symbol_report?hgnc_id=24535), WDSOF1

Application Details

WB 1:500-1:2000
IHC 1:50-1:200
IP 1:50

Contents

Rabbit IgG in phosphate buffered saline, pH 7.4, 150mM NaCl, 0.02% sodium azide and 50% glycerol, 0.4-0.5mg/ml BSA.

Immunogen

A synthesized peptide derived from human DCAF13

Purification

Affinity-chromatography

Storage

Store at -20°C for one year. For short term storage and frequent use, store at 4°C for up to one month. Avoid repeated freeze-thaw cycles.

Anti-DCAF13 Rabbit Monoclonal Antibody - Protein Information

Name DCAF13 ([HGNC:24535](#))

Synonyms WDSOF1

Function

Part of the small subunit (SSU) processome, first precursor of the small eukaryotic ribosomal subunit. During the assembly of the SSU processome in the nucleolus, many ribosome biogenesis factors, an RNA chaperone and ribosomal proteins associate with the nascent pre- rRNA and work in concert to generate RNA folding, modifications, rearrangements and cleavage as well as targeted degradation of pre- ribosomal RNA by the RNA exosome (PubMed:34516797). Participates in the 18S rRNA processing in growing oocytes, being essential for oocyte nonsurrounded nucleolus (NSN) to surrounded nucleolus (SN) transition (PubMed:30283081).

Cellular Location

Nucleus, nucleolus. Note=In the nucleolus, localizes predominantly in the granular component, but also detected in the fibrillar center and dense fibrillar component

Tissue Location

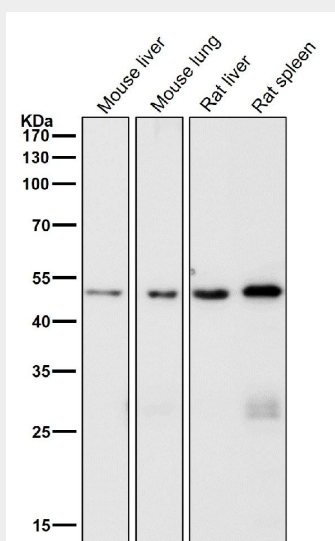
Expressed in the endometrium during decidualization. Expression is down-regulated in preeclampsia decidual tissues.

Anti-DCAF13 Rabbit Monoclonal Antibody - Protocols

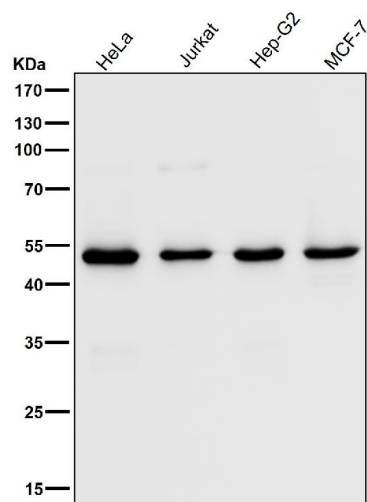
Provided below are standard protocols that you may find useful for product applications.

- [Western Blot](#)
- [Blocking Peptides](#)
- [Dot Blot](#)
- [Immunohistochemistry](#)
- [Immunofluorescence](#)
- [Immunoprecipitation](#)
- [Flow Cytometry](#)
- [Cell Culture](#)

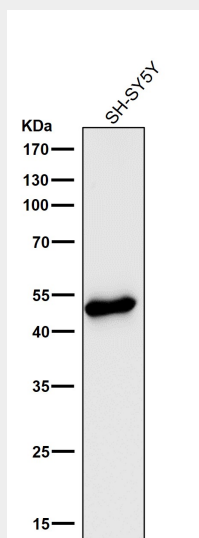
Anti-DCAF13 Rabbit Monoclonal Antibody - Images



All lanes use the Antibody at 1:6K dilution for 1 hour at room temperature.



All lanes use the Antibody at 1:6K dilution for 1 hour at room temperature.



All lanes use the Antibody at 1:6K dilution for 1 hour at room temperature.