

DYKDDDDK Tag Antibody (Clone IE6)
Mouse Monoclonal Antibody
Catalog # ABV10015**Specification**

DYKDDDDK Tag Antibody (Clone IE6) - Product Information

Application	WB, IP
Reactivity	All Species
Host	Mouse
Clonality	Monoclonal
Isotype	Mouse IgG2b

DYKDDDDK Tag Antibody (Clone IE6) - Additional Information

Application & Usage	Western blotting (0.5 µg/ml).
Other Names	
FLAG, DYKDDDDK	

Target/Specificity
DYKDDDDK

Antibody Form
Liquid

Appearance
Colorless liquid

Formulation
100 µg (0.5 mg/ml) peptide affinity purified rabbit polyclonal antibody in phosphate-buffered saline (PBS) containing 30% glycerol, 0.5% BSA, and 0.01% thimerosal.

Handling
The antibody solution should be gently mixed before use.

Reconstitution & Storage
-20 °C

Background Descriptions

Precautions
DYKDDDDK Tag Antibody (Clone IE6) is for research use only and not for use in diagnostic or therapeutic procedures.

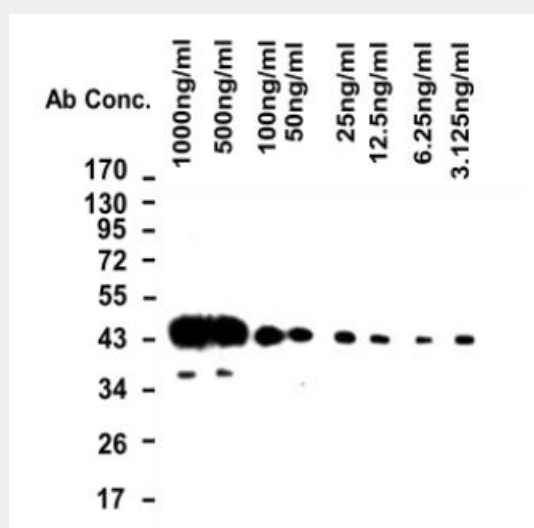
DYKDDDDK Tag Antibody (Clone IE6) - Protein Information

DYKDDDDK Tag Antibody (Clone IE6) - Protocols

Provided below are standard protocols that you may find useful for product applications.

- [Western Blot](#)
- [Blocking Peptides](#)
- [Dot Blot](#)
- [Immunohistochemistry](#)
- [Immunofluorescence](#)
- [Immunoprecipitation](#)
- [Flow Cytometry](#)
- [Cell Culture](#)

DYKDDDDK Tag Antibody (Clone IE6) - Images



Primary Antibody □ Anti-Flag, 0.5 mg/ml, shown: 1000 ng/ml-3.125 ng/ml; Secondary Antibody □ goat anti-mouse IgG HRP 1:5000. Develop the blots □ 2 min; Expose light film □ 5 min

DYKDDDDK Tag Antibody (Clone IE6) - Background

The DYKDDDDK Tag Antibody is a high-affinity mouse monoclonal antibody that can be used to detect DYKDDDDK-tagged proteins. It can detect N-terminal, C-terminal and internal tagged fusion proteins. This antibody recognizes the same epitope recognized by Sigma's anti-FLAG® antibodies.