

**Cytochrome c Antibody**  
**Rabbit Polyclonal Antibody**  
**Catalog # ABV10017****Specification**

---

**Cytochrome c Antibody - Product Information**

Application	WB
Primary Accession	<a href="#">P10715</a>
Other Accession	<a href="#">NP_036972</a>
Reactivity	Human, Mouse, Rat, Chicken, Bovine, Dog
Host	Rabbit
Clonality	Polyclonal
Isotype	Rabbit IgG
Calculated MW	11743

**Cytochrome c Antibody - Additional Information****Gene ID** 25310

Application & Usage	Western blotting (0.5-4 µg/ml) and immunoprecipitation (10-20 µg/ml). The cytochrome c antibody detects the 12.6 kDa cytochrome c from human, mouse, and rat samples. Jurkat cell lysate, NIH3T3 cell lysate, and rat kidney tissue lysate can be used as positive controls.
---------------------	--

**Other Names**  
CYCS, CYC**Target/Specificity**  
Cytochrome c**Antibody Form**  
Liquid**Appearance**  
Colorless liquid**Formulation**  
100 µg (0.2 mg/ml) affinity purified rabbit anti-Cytochrome c polyclonal antibody in phosphate buffered saline (PBS), pH 7.2, containing 30% glycerol, 0.5% BSA, 0.01% thimerosal.**Handling**  
The antibody solution should be gently mixed before use.**Reconstitution & Storage**  
-20 °C**Background Descriptions**

**Precautions**

Cytochrome c Antibody is for research use only and not for use in diagnostic or therapeutic procedures.

**Cytochrome c Antibody - Protein Information****Name** Cyct**Function**

Electron carrier protein. The oxidized form of the cytochrome c heme group can accept an electron from the heme group of the cytochrome c1 subunit of cytochrome reductase. Cytochrome c then transfers this electron to the cytochrome oxidase complex, the final protein carrier in the mitochondrial electron-transport chain.

**Cellular Location**

Mitochondrion intermembrane space. Note=Loosely associated with the inner membrane

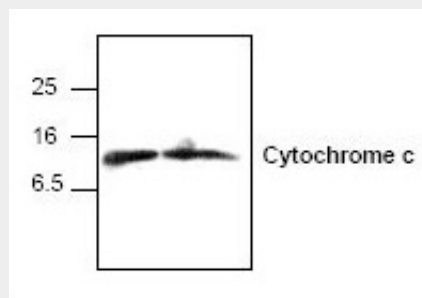
**Tissue Location**

This is one of two isocytochromes C found in the testis. The other is identical with the form found in other rat tissues. These cytochromes are assumed to be located in the sperm

**Cytochrome c Antibody - Protocols**

Provided below are standard protocols that you may find useful for product applications.

- [Western Blot](#)
- [Blocking Peptides](#)
- [Dot Blot](#)
- [Immunohistochemistry](#)
- [Immunofluorescence](#)
- [Immunoprecipitation](#)
- [Flow Cytometry](#)
- [Cell Culture](#)

**Cytochrome c Antibody - Images**

Western blot analysis of cytochrome c in Jurkat (left lane) and 3T3 (right lane) cell lysates.

**Cytochrome c Antibody - Background**

Cytochrome c (m.w. 12,500) is an electron transport protein from mitochondria. It is released from mitochondria to cytoplasm during the early stages of apoptosis, prior to caspase activation, DNA fragmentation, and loss of membrane potential. The cytoplasmic cytochrome c is associated with

Apaf-1 and caspase-9 to activate caspase-3 and other caspases