

**PBR Antibody**  
**Rabbit Polyclonal Antibody**  
**Catalog # ABV10033****Specification**

---

**PBR Antibody - Product Information**

Application	WB
Primary Accession	<a href="#">P61328</a>
Other Accession	<a href="#">BAA04749</a>
Reactivity	Human, Mouse, Rat
Host	Rabbit
Clonality	Polyclonal
Isotype	Rabbit IgG
Calculated MW	27399

**PBR Antibody - Additional Information****Gene ID 2257**

Application & Usage	Western blot analysis (0.5-4 µg/ml) and Immunohistochemistry (10-20 µg/ml). However, the optimal conditions should be determined individually.
---------------------	--

**Other Names**

peripheral-type benzodiazepine receptor

**Target/Specificity**

PBR

**Antibody Form**

Liquid

**Appearance**

Colorless liquid

**Formulation**

100 µg (0.5 mg/ml) affinity purified rabbit anti-PBR polyclonal antibody in phosphate buffered saline (PBS), pH 7.2.

**Handling**

The antibody solution should be gently mixed before use.

**Reconstitution & Storage**

-20 °C

**Background Descriptions****Precautions**

PBR Antibody is for research use only and not for use in diagnostic or therapeutic procedures.

## PBR Antibody - Protein Information

**Name** FGF12

**Synonyms** FGF12B, FHF1

### Function

Involved in nervous system development and function. Involved in the positive regulation of voltage-gated sodium channel activity. Promotes neuronal excitability by elevating the voltage dependence of neuronal sodium channel SCN8A fast inactivation.

### Cellular Location

Nucleus.

### Tissue Location

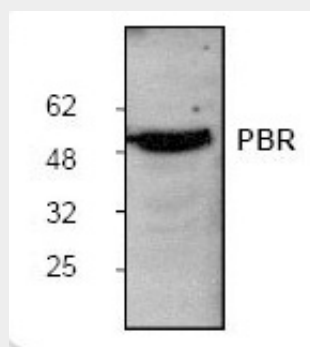
Brain, eye and testis; highly expressed in embryonic retina, olfactory epithelium, olfactory bulb, and in a segmental pattern of the body wall; in adult olfactory bulb, less in cerebellum, deep cerebellar nuclei, cortex and multiple midbrain structures

## PBR Antibody - Protocols

Provided below are standard protocols that you may find useful for product applications.

- [Western Blot](#)
- [Blocking Peptides](#)
- [Dot Blot](#)
- [Immunohistochemistry](#)
- [Immunofluorescence](#)
- [Immunoprecipitation](#)
- [Flow Cytometry](#)
- [Cell Culture](#)

## PBR Antibody - Images



Western blot analysis of PBR expression using: Lane 1: Jurkat cell lysate; Lane 2: Recombinant PBR; Lane 3: Rat kidney tissue lysate

## PBR Antibody - Background

PBR (Peripheral-type Benzodiazepine Receptor) is a ubiquitous protein (18 kDa) found in most steroidogenic tissues. It is located primarily in the outer mitochondrial membrane of

steroid-producing tissues and is found in association with a 34 kDa voltage-dependent anion channel protein (VDAC). PBR is involved in the regulation of cholesterol transport from the outer to the inner mitochondrial membrane. It is thought to be part of the mitochondrial permeability transition pore (PT) and to be involved in apoptosis.