

KLF4 antibody
Rabbit Polyclonal Antibody
Catalog # ABV10066**Specification**

KLF4 antibody - Product Information

Application	WB
Primary Accession	Q923V7
Reactivity	Human, Mouse, Rat
Host	Rabbit
Clonality	Polyclonal
Isotype	Rabbit IgG

KLF4 antibody - Additional Information

Positive Control	Mouses 3T3 cell lysate
Application & Usage	Western Blot analysis (1 µg/ml). However, the optimal concentrations should be determined individually. Blocking peptide is available separately.

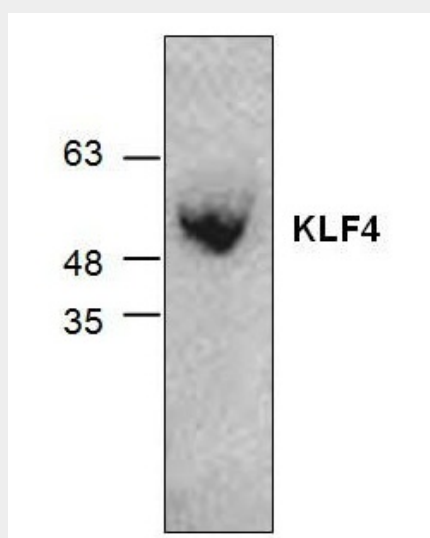
Other Names
KLF4**Target/Specificity**
KLF4**Antibody Form**
Liquid**Appearance**
Colorless liquid**Formulation**
200 µg (0.5 mg/ml) affinity purified rabbit anti-KLF4 polyclonal antibody in phosphate buffered saline (PBS), pH 7.2, containing 30% glycerol, 0.5% BSA, 5 mM EDTA and 0.01% thimerosal.**Handling**
The antibody solution should be gently mixed before use.**Reconstitution & Storage**
-20 °C**Background Descriptions****Precautions**
KLF4 antibody is for research use only and not for use in diagnostic or therapeutic procedures.**KLF4 antibody - Protein Information**

KLF4 antibody - Protocols

Provided below are standard protocols that you may find useful for product applications.

- [Western Blot](#)
- [Blocking Peptides](#)
- [Dot Blot](#)
- [Immunohistochemistry](#)
- [Immunofluorescence](#)
- [Immunoprecipitation](#)
- [Flow Cytometry](#)
- [Cell Culture](#)

KLF4 antibody - Images



Western blot analysis of KLF4 using mouse 3T3 cell lysate

KLF4 antibody - Background

KLF4 belongs to the erythroid Kruppel-like factor (EKLF) family that is involved in the differentiation of epithelial cells and may also function in skeletal and kidney development. KLF4 can act as both a repressor and activator of transcription. KLF4 regulates the expression of key transcription factors during embryonic development and is important in maintaining embryonic stem cells. It also contributes to the down-regulation of p53/TP53 transcription.