

GLP-1 Antibody (Clone HGL-B5)
Mouse Monoclonal Antibody
Catalog # ABV10081**Specification**

GLP-1 Antibody (Clone HGL-B5) - Product Information

Application	E, IF
Primary Accession	P01275
Reactivity	Human
Host	Mouse
Clonality	Monoclonal
Isotype	Mouse IgG1
Calculated MW	20909

GLP-1 Antibody (Clone HGL-B5) - Additional Information**Gene ID 2641****Application & Usage**

The antibody can be used for indirect ELISA and IF.

Other Names

Glucagon, Glicentin, Glicentin-related polypeptide, GRPP, Oxyntomodulin, OXM, OXY, Glucagon-like peptide 1, GLP-1, Glucagon-like peptide 1(7-37), GLP-1(7-37), Glucagon-like peptide 1(7-36), GLP-1(7-36), Glucagon-like peptide 2, GLP-2, GCG

Target/Specificity

GLP-1

Antibody Form

Liquid

Appearance

Colorless liquid

Formulation

100 µg (1.0 mg/ml) purified mouse monoclonal antibody supplied in PBS with 0.05% (W/V) sodium azide.

Handling

The antibody solution should be gently mixed before use.

Reconstitution & Storage

-20 °C

Background Descriptions**Precautions**

GLP-1 Antibody (Clone HGL-B5) is for research use only and not for use in diagnostic or therapeutic procedures.

GLP-1 Antibody (Clone HGL-B5) - Protein Information

Name GCG ([HGNC:4191](#))

Function

[Glucagon]: Plays a key role in glucose metabolism and homeostasis. Regulates blood glucose by increasing gluconeogenesis and decreasing glycolysis. A counterregulatory hormone of insulin, raises plasma glucose levels in response to insulin-induced hypoglycemia. Plays an important role in initiating and maintaining hyperglycemic conditions in diabetes.

Cellular Location

Secreted.

Tissue Location

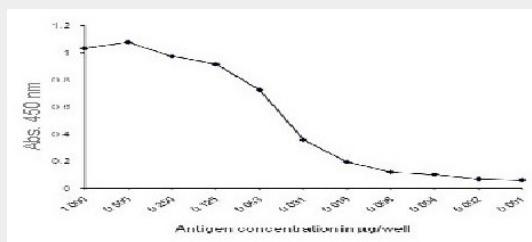
[Glucagon]: Secreted in the A cells of the islets of Langerhans. [Glucagon-like peptide 2]: Secreted from enteroendocrine cells throughout the gastrointestinal tract. Also secreted in selected neurons in the brain [Oxyntomodulin]: Secreted from enteroendocrine cells throughout the gastrointestinal tract

GLP-1 Antibody (Clone HGL-B5) - Protocols

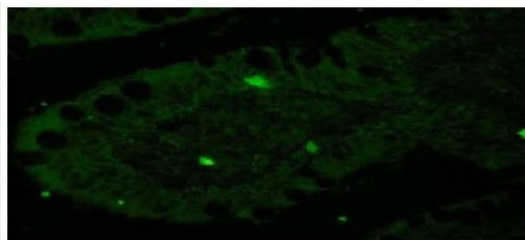
Provided below are standard protocols that you may find useful for product applications.

- [Western Blot](#)
- [Blocking Peptides](#)
- [Dot Blot](#)
- [Immunohistochemistry](#)
- [Immunofluorescence](#)
- [Immunoprecipitation](#)
- [Flow Cytometry](#)
- [Cell Culture](#)

GLP-1 Antibody (Clone HGL-B5) - Images



Anti-human GLP1 antibody was used at 1 µg per well for detection of antigen (peptide, 1 µg serially diluted and coated). The antibody at 10µg/ml concentration can sensitively detect coated antigen up to 2 ng per well.



Antigen retrieval was done with Tris-EDTA, pH9.0 in pressure cooker for 20 minutes. Optimum staining of L-type cells secreting GLP1 was observed.

GLP-1 Antibody (Clone HGL-B5) - Background

Glucagon-like peptide-1 (GLP-1) is identified as a gut hormone with potent insulin-releasing activity. GLP-1 possesses several physiological properties that make it a subject of intensive investigation as a potential treatment of diabetes mellitus. In addition, GLP-1 has other biological functions such as reduction of food intake and deceleration of gastric emptying.