

**Gai2 Antibody**  
**Rabbit Polyclonal Antibody**  
**Catalog # ABV10194****Specification**

---

**Gai2 Antibody - Product Information**

Application	<b>WB, IP</b>
Primary Accession	<a href="#">P04899</a>
Other Accession	<a href="#">AAM12620</a>
Reactivity	<b>Human</b>
Host	<b>Rabbit</b>
Clonality	<b>Polyclonal</b>
Isotype	<b>Rabbit IgG</b>
Calculated MW	<b>40451</b>

**Gai2 Antibody - Additional Information****Gene ID 2771**

Application & Usage	<b>Western blot (at 0.5-4 µg/ml) and immunoprecipitation. However, the optimal conditions should be determined individually.</b>
---------------------	--

**Other Names**

guanine nucleotide binding protein G, GNAI2B, guanine nucleotide binding protein

**Target/Specificity**

Gai2

**Antibody Form**

Liquid

**Appearance**

Colorless liquid

**Formulation**

100 µg (0.5 mg/ml) affinity-purified rabbit anti-Gai2 polyclonal antibody in phosphate buffered saline (PBS), pH 7.2, containing 30% glycerol, 0.5% BSA, 0.01% thimerosal.

**Handling**

The antibody solution should be gently mixed before use.

**Reconstitution & Storage**

-20 °C

**Background Descriptions****Precautions**

Gai2 Antibody is for research use only and not for use in diagnostic or therapeutic procedures.

## Gai2 Antibody - Protein Information

**Name** GNAI2

**Synonyms** GNAI2B

### Function

Guanine nucleotide-binding proteins (G proteins) are involved as modulators or transducers in various transmembrane signaling systems. The G(i) proteins are involved in hormonal regulation of adenylate cyclase: they inhibit the cyclase in response to beta- adrenergic stimuli. May play a role in cell division.

### Cellular Location

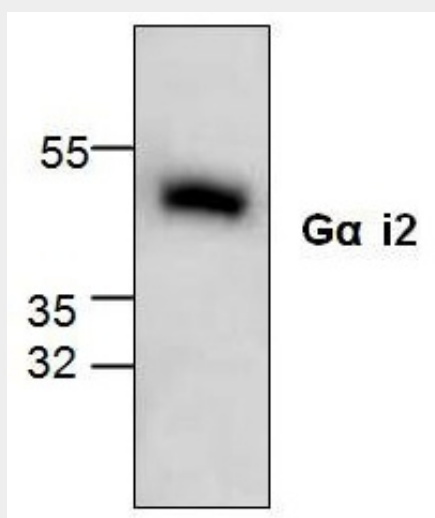
Cytoplasm. Cytoplasm, cytoskeleton, microtubule organizing center, centrosome. Cell membrane. Membrane; Lipid-anchor. Note=Localizes in the centrosomes of interphase and mitotic cells. Detected at the cleavage furrow and/or the midbody

## Gai2 Antibody - Protocols

Provided below are standard protocols that you may find useful for product applications.

- [Western Blot](#)
- [Blocking Peptides](#)
- [Dot Blot](#)
- [Immunohistochemistry](#)
- [Immunofluorescence](#)
- [Immunoprecipitation](#)
- [Flow Cytometry](#)
- [Cell Culture](#)

## Gai2 Antibody - Images



Western blot analysis of Gαi2 expression in 3T3 cell lysate.

## Gai2 Antibody - Background

Gαi2 is a 40-41 kDa alpha-subunit of heterotrimeric protein that shares sequence homology with Gαi3 and Gαi1. All these G proteins can be ADP-ribosylated at the carboxy terminal Cys of the CAAX sequence, interfering with receptor coupling. Gαi2 is expressed widely in tissues and cell lines. Activation of PLC-β by Gαi-coupled receptors is the result of release of Gβγ subunits from Gαi. Gαi2 regulates potassium channel activation. Mutation at Arg179 has been identified in tumors. This and the Q205L mutant inhibit adenylyl cyclase.