

Ga15/16 Antibody
Rabbit Polyclonal Antibody
Catalog # ABV10195**Specification**

Ga15/16 Antibody - Product Information

Application	WB
Primary Accession	P30679
Other Accession	AAC25612
Reactivity	Human, Mouse, Rat
Host	Rabbit
Clonality	Polyclonal
Isotype	Rabbit IgG
Calculated MW	43508

Ga15/16 Antibody - Additional Information**Gene ID 2769**

Application & Usage	Western blotting (0.5-4 µg/ml) and in Immunohistochemistry (5-20 µg/ml). However, the optimal conditions should be determined individually. The antibody detects Gα15 in samples from human, mouse, rat, and rabbit origins. It also detects Gα16 from samples of human origin. Reactivity to other species has not been determined.
---------------------	--

Other Names
G alpha binding protein

Target/Specificity
Ga 15/16

Antibody Form
Liquid

Appearance
Colorless liquid

Formulation
100 µg (0.5 mg/ml) affinity purified rabbit anti-Gα15 polyclonal antibody in PBS (pH 7.2) containing 30% glycerol, 0.5% BSA, 0.01% thimerosal.

Handling
The antibody solution should be gently mixed before use.

Reconstitution & Storage
-20 °C

Background Descriptions

Precautions

Ga15/16 Antibody is for research use only and not for use in diagnostic or therapeutic procedures.

Ga15/16 Antibody - Protein Information

Name GNA15

Synonyms GNA16

Function

Guanine nucleotide-binding proteins (G proteins) are involved as modulators or transducers in various transmembrane signaling systems.

Tissue Location

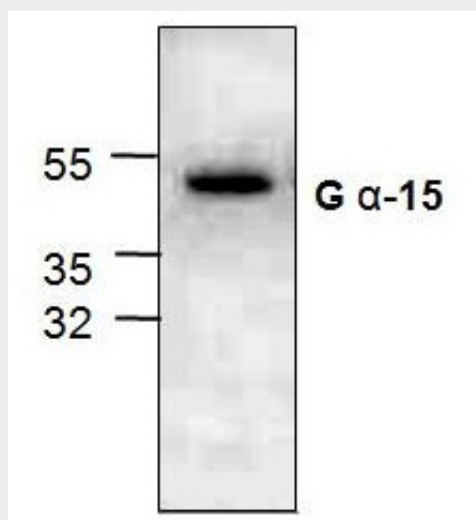
Specifically expressed in hematopoietic cells. Expressed in epididymis (at protein level)

Ga15/16 Antibody - Protocols

Provided below are standard protocols that you may find useful for product applications.

- [Western Blot](#)
- [Blocking Peptides](#)
- [Dot Blot](#)
- [Immunohistochemistry](#)
- [Immunofluorescence](#)
- [Immunoprecipitation](#)
- [Flow Cytometry](#)
- [Cell Culture](#)

Ga15/16 Antibody - Images



Western blot analysis of Gα-15 expression in 3T3 cell lysate.

Gα15/16 Antibody - Background

Gα16 is the only heterotrimeric G protein with a restricted expression pattern in hematopoietic cells. Differentiation of promyelocytic cells leads to decreased expression of Gα16. The G protein is known to couple a large number of G protein-coupled receptors to PLC-β and can lead to production of the secondary messengers diacylglycerol and inositol phosphates. Targeted deletion of Gα15, a mouse orthologue of human Gα16, causes reduced C5α receptor signaling. Gα16 serves as a marker, in addition to CD34, for hematopoietic progenitor cells.