

Bcl-xL Antibody
Rabbit Polyclonal Antibody
Catalog # ABV10236**Specification**

Bcl-xL Antibody - Product Information

Application	WB
Primary Accession	O92934
Reactivity	Human, Mouse, Rat
Host	Rabbit
Clonality	Polyclonal
Isotype	Rabbit IgG
Calculated MW	18392

Bcl-xL Antibody - Additional Information**Gene ID 572**

Application & Usage	Western blotting (0.5-4 µg/ml) and immunoprecipitation (20 µ/ml). However, the optimal conditions should be determined individually. The antibody detects the 30 kDa Bcl-xL protein. It does not react with other Bcl-2 family members.
---------------------	---

Other Names

Bcl-xL, Bcl-xS, BCL2L1, BCL2-like 1 protein

Target/Specificity

Bcl-xL

Antibody Form

Liquid

Appearance

Colorless liquid

Formulation

100 µg (0.5 mg/ml) affinity purified, rabbit anti-Bcl-xL polyclonal antibody in phosphate buffered saline (PBS), pH 7.2, containing 30% glycerol, 0.5% BSA, 0.01% thimerosal.

Handling

The antibody solution should be gently mixed before use.

Reconstitution & Storage

-20 °C

Background Descriptions**Precautions**

Bcl-xL Antibody is for research use only and not for use in diagnostic or therapeutic procedures.

Bcl-xL Antibody - Protein Information

Name BAD

Synonyms BBC6, BCL2L8

Function

Promotes cell death. Successfully competes for the binding to Bcl-X(L), Bcl-2 and Bcl-W, thereby affecting the level of heterodimerization of these proteins with BAX. Can reverse the death repressor activity of Bcl-X(L), but not that of Bcl-2 (By similarity). Appears to act as a link between growth factor receptor signaling and the apoptotic pathways.

Cellular Location

Mitochondrion outer membrane. Cytoplasm {ECO:0000250|UniProtKB:Q61337}. Note=Colocalizes with HIF3A in the cytoplasm (By similarity). Upon phosphorylation, locates to the cytoplasm. {ECO:0000250|UniProtKB:Q61337}

Tissue Location

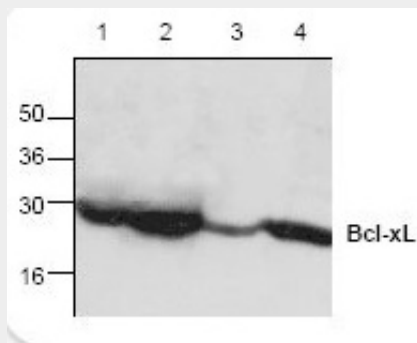
Expressed in a wide variety of tissues.

Bcl-xL Antibody - Protocols

Provided below are standard protocols that you may find useful for product applications.

- [Western Blot](#)
- [Blocking Peptides](#)
- [Dot Blot](#)
- [Immunohistochemistry](#)
- [Immunofluorescence](#)
- [Immunoprecipitation](#)
- [Flow Cytometry](#)
- [Cell Culture](#)

Bcl-xL Antibody - Images



Western blot analysis of Bcl-xL expression in Jurkat (Lane 1&2), mouse small intestine (Lane 3), and rat kidney (Lane 4) lysates.

Bcl-xL Antibody - Background

Bcl-xL is a 30 kDa anti-apoptotic protein belonging to the Bcl-2 family. Bcl-xL prevents apoptosis through two different mechanisms: by heterodimerization with an apoptotic protein to inhibit its apoptotic effect, and by its direct pore-forming effect on the outer-membrane of mitochondria to help maintain a normal membrane state under stress conditions. Bcl-xL can be cleaved by caspases upon apoptotic activation, which converts Bcl-xL from an antiapoptotic protein to a proapoptotic cleavage product. The cleavage product of Bcl-xL forms cytochrome c-releasing pores in the mitochondrial membrane to facilitate the apoptosis signaling pathway.