

**p53DINP1 Antibody**  
**Rabbit Polyclonal Antibody**  
**Catalog # ABV10250****Specification**

---

**p53DINP1 Antibody - Product Information**

Application	WB
Primary Accession	<a href="#">Q96A56</a>
Reactivity	Human, Mouse, Rat
Host	Rabbit
Clonality	Polyclonal
Isotype	Rabbit IgG
Calculated MW	27366

**p53DINP1 Antibody - Additional Information****Gene ID** 94241

Application & Usage	<b>Western blotting (0.5-4 µg/ml) and Immunohistochemistry (5-10 µg/ml). However, the optimal dilution conditions should be determined individually. Human Lung tissue lysate can be used as a positive control. The antibody detects the 27 kDa p53DINP1-α in human, mouse, and rat samples. A lower band (~18 kDa) which represents the p53DINP1-β was also detected in certain tissue and cells.</b>
---------------------	---

**Other Names**

TP53DINP1 Teap, TP53DINP1A, p53DINP1, P53DINP1, TP53DINP1, SIP , FLJ22139, DKFZp434M1317, TP53INP1B

**Target/Specificity**

p53DINP1

**Antibody Form**

Liquid

**Appearance**

Colorless liquid

**Formulation**

100 µg(0.5 mg/ml) affinity purified rabbit anti-p53DINP1 polyclonal antibody in phosphate buffered saline (PBS), pH 7.2, containing 30% glycerol, 0.5% BSA, 0.01% thimerosal.

**Handling**

The antibody solution should be gently mixed before use.

**Reconstitution & Storage**

-20 °C

## Background Descriptions

### Precautions

p53DINP1 Antibody is for research use only and not for use in diagnostic or therapeutic procedures.

## p53DINP1 Antibody - Protein Information

**Name** TP53INP1

**Synonyms** P53DINP1, SIP

### Function

Antiproliferative and proapoptotic protein involved in cell stress response which acts as a dual regulator of transcription and autophagy. Acts as a positive regulator of autophagy. In response to cellular stress or activation of autophagy, relocates to autophagosomes where it interacts with autophagosome-associated proteins GABARAP, GABARAPL1/L2, MAP1LC3A/B/C and regulates autophagy. Acts as an antioxidant and plays a major role in p53/TP53-driven oxidative stress response. Possesses both a p53/TP53-independent intracellular reactive oxygen species (ROS) regulatory function and a p53/TP53-dependent transcription regulatory function. Positively regulates p53/TP53 and p73/TP73 and stimulates their capacity to induce apoptosis and regulate cell cycle. In response to double-strand DNA breaks, promotes p53/TP53 phosphorylation on 'Ser-46' and subsequent apoptosis. Acts as a tumor suppressor by inducing cell death by an autophagy and caspase-dependent mechanism. Can reduce cell migration by regulating the expression of SPARC.

### Cellular Location

Cytoplasm, cytosol. Nucleus. Nucleus, PML body. Cytoplasmic vesicle, autophagosome. Note=Shuttles between the nucleus and the cytoplasm, depending on cellular stress conditions, and re- localizes to autophagosomes on autophagy activation

### Tissue Location

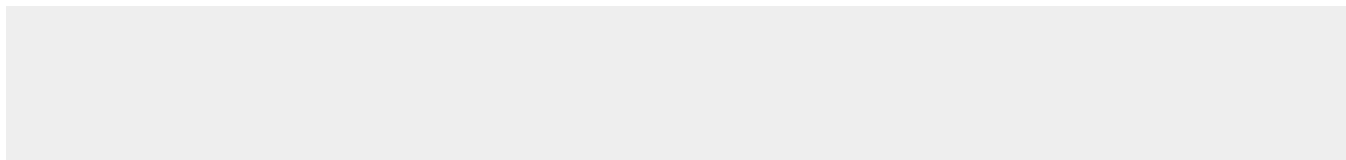
Ubiquitously expressed.

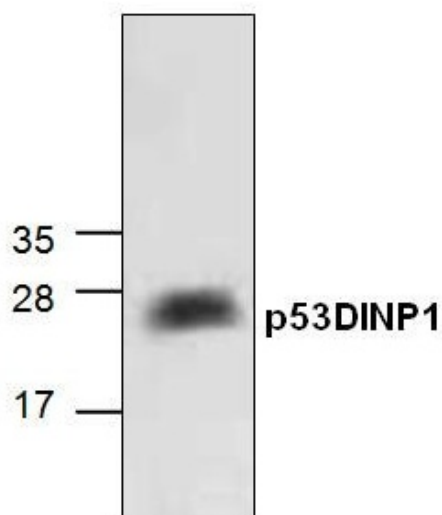
## p53DINP1 Antibody - Protocols

Provided below are standard protocols that you may find useful for product applications.

- [Western Blot](#)
- [Blocking Peptides](#)
- [Dot Blot](#)
- [Immunohistochemistry](#)
- [Immunofluorescence](#)
- [Immunoprecipitation](#)
- [Flow Cytometry](#)
- [Cell Culture](#)

## p53DINP1 Antibody - Images





Western blot analysis of p53DINP1 expression in rat kidney tissue lysate.

#### **p53DINP1 Antibody - Background**

p53DINP1 (p53-dependent damage-inducible nuclear protein 1) encodes two proteins termed p53DINP1- $\alpha$  (27 kDa) and p53DINP1- $\beta$  (18 kDa). p53DINP1 may regulate p53-dependent apoptosis through phosphorylation at Ser46 and induction of p53AIP1. p53DINP1 is expressed in many tissues and induced by a variety of stress agents including UV stress, mutagenic stress, heat shock, and oxidative stress.