

Cytochrome c Antibody
Rabbit Polyclonal Antibody
Catalog # ABV10257**Specification**

Cytochrome c Antibody - Product Information

Application	WB
Primary Accession	P62898.2
Other Accession	NP_036971
Reactivity	Rat
Host	Rabbit
Clonality	Polyclonal
Isotype	Rabbit IgG

Cytochrome c Antibody - Additional Information

Application & Usage	Western blotting (0.5-4 µg/ml) and immunoprecipitation (10-20 µg/ml). The cytochrome c antibody detects the 12.6 kDa cytochrome c from human, mouse, and rat samples. Jurkat cell lysate, NIH3T3 cell lysate, and rat kidney tissue lysate can be used as positive controls.
---------------------	--

Other Names
CYCS, CYC**Target/Specificity**
Cytochrome c**Antibody Form**
Liquid**Appearance**
Colorless liquid**Formulation**
100 µg (0.2 mg/ml) affinity purified rabbit anti-Cytochrome c polyclonal antibody in phosphate buffered saline (PBS), pH 7.2, containing 30% glycerol, 0.5% BSA, 0.01% thimerosal.**Handling**
The antibody solution should be gently mixed before use.**Reconstitution & Storage**
-20 °C**Background Descriptions****Precautions**
Cytochrome c Antibody is for research use only and not for use in diagnostic or therapeutic

procedures.

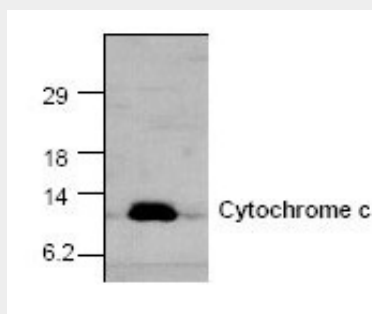
Cytochrome c Antibody - Protein Information

Cytochrome c Antibody - Protocols

Provided below are standard protocols that you may find useful for product applications.

- [Western Blot](#)
- [Blocking Peptides](#)
- [Dot Blot](#)
- [Immunohistochemistry](#)
- [Immunofluorescence](#)
- [Immunoprecipitation](#)
- [Flow Cytometry](#)
- [Cell Culture](#)

Cytochrome c Antibody - Images



Western blot analysis of cytochrome c expression in rat kidney tissue lysate.

Cytochrome c Antibody - Background

Cytochrome c (m.w. 12,500) is an electron transport protein from mitochondria. It is released from mitochondria to cytoplasm during the early stages of apoptosis, prior to caspase activation, DNA fragmentation, and loss of membrane potential. The cytoplasmic cytochrome c is associated with Apaf-1 and caspase-9 to activate caspase-3 and other caspases