

Wnt-1 Antibody
Rabbit Polyclonal Antibody
Catalog # ABV10421**Specification**

Wnt-1 Antibody - Product Information

Application	WB
Primary Accession	P04628
Reactivity	Human
Host	Rabbit
Clonality	Polyclonal
Isotype	Rabbit IgG
Calculated MW	40982

Wnt-1 Antibody - Additional Information**Gene ID** 7471

Application & Usage	Western blotting (0.5-4 µg/ml), Immunohistochemistry (10-20 µg/ml). However, the optimal concentrations should be determined individually. The antibody recognizes 41kDa of human Wnt-1. Reactivity to other species has not been tested.
---------------------	---

Other Names

wnt1, wnt 1, wnt-1, INT 1 , INT1, wingless type MMTV integration site family member 1

Target/Specificity

Wnt-1

Antibody Form

Liquid

Appearance

Colorless liquid

Formulation

100 µg (0.5 mg/ml) affinity purified rabbit Wnt-1 polyclonal antibody in phosphate-buffered saline (PBS) containing 30% glycerol, 0.5% BSA, and 0.01% thimerosal.

Handling

The antibody solution should be gently mixed before use.

Reconstitution & Storage

-20 °C

Background Descriptions

Precautions

Wnt-1 Antibody is for research use only and not for use in diagnostic or therapeutic procedures.

Wnt-1 Antibody - Protein Information

Name WNT1

Synonyms INT1

Function

Ligand for members of the frizzled family of seven transmembrane receptors (Probable). Acts in the canonical Wnt signaling pathway by promoting beta-catenin-dependent transcriptional activation (PubMed:23499309, PubMed:26902720, PubMed:28528193, PubMed:23656646). In some developmental processes, is also a ligand for the coreceptor RYK, thus triggering Wnt signaling (By similarity). Plays an essential role in the development of the embryonic brain and central nervous system (CNS) (By similarity). Has a role in osteoblast function, bone development and bone homeostasis (PubMed:23499309, PubMed:23656646).

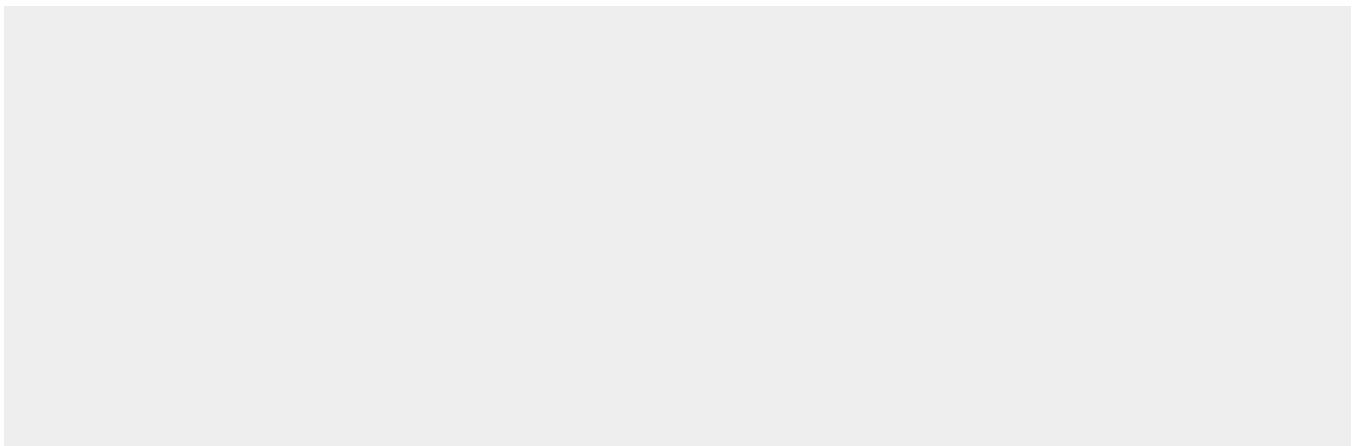
Cellular Location

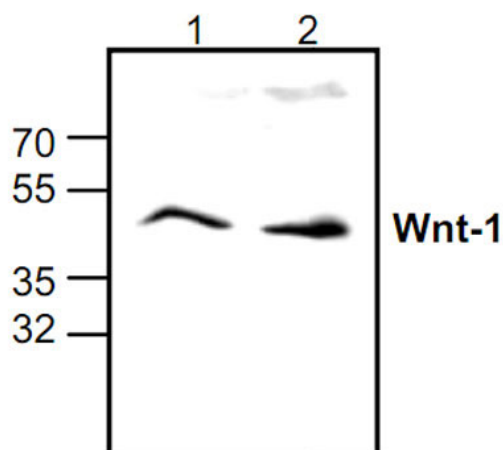
Secreted, extracellular space, extracellular matrix. Secreted

Wnt-1 Antibody - Protocols

Provided below are standard protocols that you may find useful for product applications.

- [Western Blot](#)
- [Blocking Peptides](#)
- [Dot Blot](#)
- [Immunohistochemistry](#)
- [Immunofluorescence](#)
- [Immunoprecipitation](#)
- [Flow Cytometry](#)
- [Cell Culture](#)

Wnt-1 Antibody - Images



Western blot analysis of Wnt-1 expression in Jurkat cell lysates (Lane 1, 2).

Wnt-1 Antibody - Background

Wnt gene family members, including Wnt-1 through Wnt-10, play a key role in regulating cellular growth and differentiation. Wnt-1 is a cysteine-rich, secreted glycoprotein that associates with cell membranes and likely functions as a key regulator of cellular adhesion. Wnt-1, which is essential for normal development of the embryonic nervous system, contributes to hyperplasia and tumorigenic progression when improperly expressed in mammary tissue. Wnt-3 is also involved in tumorigenesis and Wnt-2 and Wnt-4 may be associated with abnormal proliferation in human breast tissue. Wnt-1, Wnt-3 and Wnt-10b have been implicated along with FGF-3 in the development of mouse mammary tumor virus induced mouse mammary carcinomas.