

**KISS-1 Antibody**  
**Rabbit Polyclonal Antibody**  
**Catalog # ABV10436****Specification**

---

**KISS-1 Antibody - Product Information**

Application	WB
Primary Accession	<a href="#">Q6Y4S4</a>
Other Accession	<a href="#">NP_839991</a>
Reactivity	Human, Mouse, Rat
Host	Rabbit
Clonality	Polyclonal
Isotype	Rabbit IgG
Calculated MW	14117

**KISS-1 Antibody - Additional Information****Gene ID** 280287**Application & Usage**

**Western blotting (0.5-4 µg/ml).** However, the optimal concentrations should be determined individually. Jurkat cell lysate can be used as a positive control. The antibody recognizes 16 kDa human KISS-1 in Western blot analysis with Jurkat cell lysate. Blocking peptide is available separately.

**Other Names**

Kisspeptin-1 , kisspeptin , kisspeptin1 , KISS1 , MGC39258

**Target/Specificity**

Kiss-1

**Antibody Form**

Liquid

**Appearance**

Colorless liquid

**Formulation**

100 µg (0.2 mg/ml) affinity purified rabbit polyclonal antibody in phosphate-buffered saline (PBS) containing 30% glycerol, 0.5% BSA, and 0.01% thimerosal.

**Handling**

The antibody solution should be gently mixed before use.

**Reconstitution & Storage**

-20 °C

**Background Descriptions**

**Precautions**

KiSS-1 Antibody is for research use only and not for use in diagnostic or therapeutic procedures.

**KiSS-1 Antibody - Protein Information**

**Name** Kiss1

**Function**

Metastasis suppressor protein. May regulate events downstream of cell-matrix adhesion, perhaps involving cytoskeletal reorganization. Generates a C-terminally amidated peptide, metastin which functions as the endogenous ligand of the G-protein coupled receptor GPR54. Activation of the receptor inhibits cell proliferation and cell migration, key characteristics of tumor metastasis. The receptor is also essential for normal gonadotropin-released hormone physiology and for puberty. The hypothalamic KiSS1/GPR54 system is a pivotal factor in central regulation of the gonadotropic axis at puberty and in adulthood. Intracerebroventricular administration induces an increase in serum LH and FSH levels in prepubertal male and female as well as in adult animals.

**Cellular Location**

Secreted.

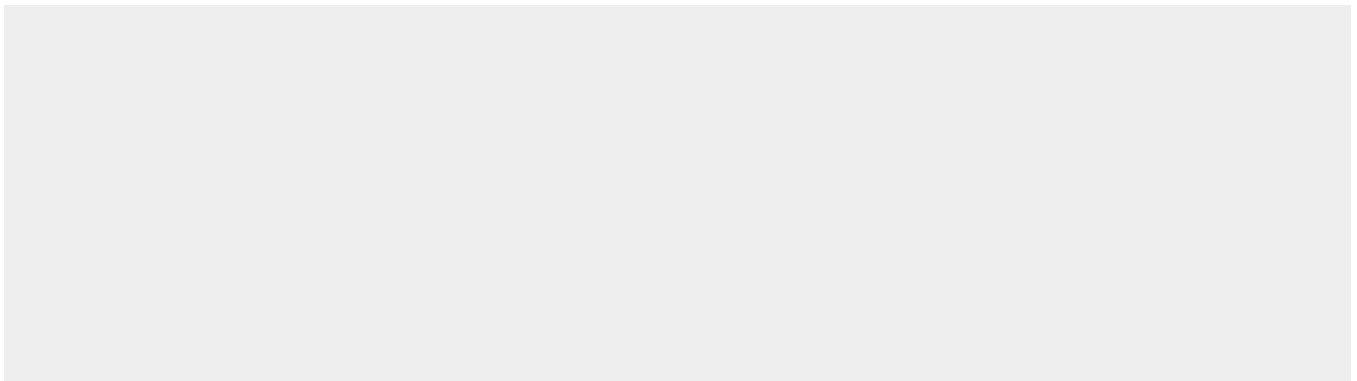
**Tissue Location**

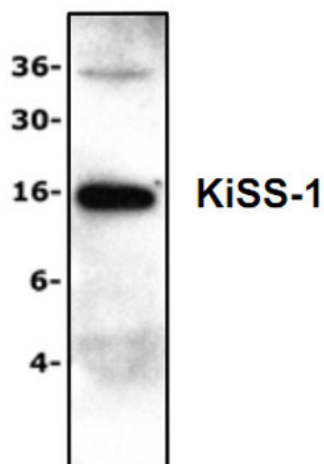
Weak in all tissue types with highest levels in lung and 15- 17-day embryos. Expressed in areas of the hypothalamus implicated in the neuroendocrine regulation of gonadotropin secretion, including the anteroventral periventricular nucleus, the periventricular nucleus, and the arcuate nucleus

**KiSS-1 Antibody - Protocols**

Provided below are standard protocols that you may find useful for product applications.

- [Western Blot](#)
- [Blocking Peptides](#)
- [Dot Blot](#)
- [Immunohistochemistry](#)
- [Immunofluorescence](#)
- [Immunoprecipitation](#)
- [Flow Cytometry](#)
- [Cell Culture](#)

**KiSS-1 Antibody - Images**



Western Blot Analysis of KiSS-1 expression with Jurkat Cell Lysate.

#### **KiSS-1 Antibody - Background**

KiSS-1 has been reported to suppress metastases of melanomas and breast carcinomas without affecting tumorigenicity. Human KiSS-1 transcripts are predominately expressed in the brain and placenta. Expression of KiSS-1 reduces the level of NFkB p50/p65 binding to the MMP9 promoter and correlates with diminished expression of the 92 kDa type IV collagenase (MMP-9). KiSS-1 may regulate events downstream of cell-matrix adhesion in mechanisms involving cytoskeletal reorganization.