

Phospho (Ser19) Tyrosine Hydroxylase Antibody
Rabbit Polyclonal Antibody
Catalog # ABV10457**Specification**

Phospho (Ser19) Tyrosine Hydroxylase Antibody - Product Information

Application	WB
Primary Accession	P01830
Reactivity	Rat
Host	Rabbit
Clonality	Polyclonal
Isotype	Rabbit IgG
Calculated MW	18172

Phospho (Ser19) Tyrosine Hydroxylase Antibody - Additional Information**Gene ID** 24832**Application & Usage**

The antibody can be used for Western blotting (1:1000), Immunofluorescence (1:1000) and Immunohistochemistry (1:1000). However, the optimal conditions should be determined individually.

Other Names

Thy-1 membrane glycoprotein, Thy-1 antigen, CD90, Thy1, Thy-1

Target/Specificity

Phospho (Ser19) THY

Antibody Form

Liquid

Appearance

Colorless liquid

Formulation

100 µl in 10 mM HEPES (pH 7.5), 150 mM NaCl, 100 µg per ml BSA and 50% glycerol.

Handling

The antibody solution should be gently mixed before use.

Reconstitution & Storage

-20 °C

Background Descriptions**Precautions**

Phospho (Ser19) Tyrosine Hydroxylase Antibody is for research use only and not for use in diagnostic or therapeutic procedures.

Phospho (Ser19) Tyrosine Hydroxylase Antibody - Protein Information

Name Thy1

Synonyms Thy-1

Function

May play a role in cell-cell or cell-ligand interactions during synaptogenesis and other events in the brain.

Cellular Location

Cell membrane; Lipid-anchor, GPI-anchor.

Tissue Location

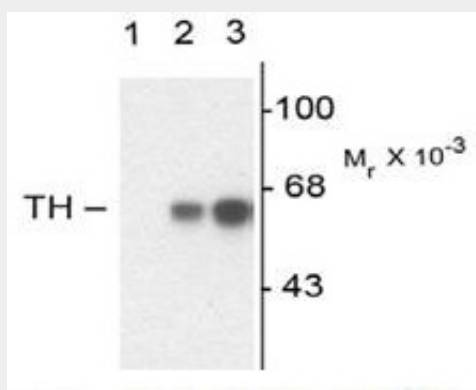
Abundant in lymphoid tissues.

Phospho (Ser19) Tyrosine Hydroxylase Antibody - Protocols

Provided below are standard protocols that you may find useful for product applications.

- [Western Blot](#)
- [Blocking Peptides](#)
- [Dot Blot](#)
- [Immunohistochemistry](#)
- [Immunofluorescence](#)
- [Immunoprecipitation](#)
- [Flow Cytometry](#)
- [Cell Culture](#)

Phospho (Ser19) Tyrosine Hydroxylase Antibody - Images



Western blot of non-phospho-recombinant tyrosine hydroxylase (Lane 1), PC-12 cell lysate (Lane 2), and PC-12 cell lysate stimulated with KCl, 30 mM for 10 min (Lane 3) showing specific immunolabeling of the ~60k tyrosine hydroxylase phosphorylated at Ser19. specific immunolabeling of the ~60kDa TH protein.

Phospho (Ser19) Tyrosine Hydroxylase Antibody - Background

Tyrosine hydroxylase (TH) is the rate-limiting enzyme in the synthesis of the catecholamines Dopamine and Norepinephrine. TH antibodies can therefore be used as markers for dopaminergic

and noradrenergic neurons in a variety of applications including depression, schizophrenia, Parkinson's disease and drug abuse (Kish et al., 2001; Zhu et al., 2000; Zhu et al., 1999). TH antibodies can also be used to explore basic mechanisms of dopamine and norepinephrine signaling (Witkovsky et al., 2000; Salvatore et al., 2001; Dunkley et al., 2004). The activity of TH is also regulated by phosphorylation (Haycock et al., 1982; Haycock et al., 1992; Jedynak et al., 2002). Phospho-specific antibodies for the phosphorylation sites on TH can be used to great effect in studying this regulation and in identifying the cells in which TH phosphorylation occurs.