

**Tyrosine Hydroxylase Antibody**  
**Rabbit Polyclonal Antibody**  
**Catalog # ABV10460****Specification**

---

**Tyrosine Hydroxylase Antibody - Product Information**

Application	<b>WB</b>
Host	<b>Rabbit</b>
Clonality	<b>Polyclonal</b>
Isotype	<b>Rabbit IgG</b>

**Tyrosine Hydroxylase Antibody - Additional Information**

Application & Usage	<b>The antibody can be used for Western blotting (1:1000). However, the optimal conditions should be determined individually.</b>
---------------------	---

**Other Names**

TH; TYH; Tyrosine hydroxylase

**Target/Specificity**

Tyrosine Hydroxylase

**Antibody Form**

Liquid

**Appearance**

Colorless liquid

**Formulation**

100 µl in 10 mM HEPES (pH 7.5), 150 mM NaCl, 100 µg per ml BSA and 50% glycerol.

**Handling**

The antibody solution should be gently mixed before use.

**Reconstitution & Storage**

-20 °C

**Background Descriptions****Precautions**

Tyrosine Hydroxylase Antibody is for research use only and not for use in diagnostic or therapeutic procedures.

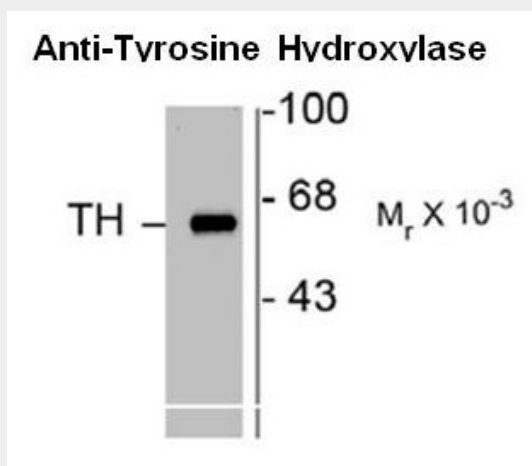
**Tyrosine Hydroxylase Antibody - Protein Information**

## Tyrosine Hydroxylase Antibody - Protocols

Provided below are standard protocols that you may find useful for product applications.

- [Western Blot](#)
- [Blocking Peptides](#)
- [Dot Blot](#)
- [Immunohistochemistry](#)
- [Immunofluorescence](#)
- [Immunoprecipitation](#)
- [Flow Cytometry](#)
- [Cell Culture](#)

## Tyrosine Hydroxylase Antibody - Images



Western blot of 10  $\mu$ g of rat caudate lysate showing specific immunolabeling of the ~60kDa TH protein.

## Tyrosine Hydroxylase Antibody - Background

Tyrosine hydroxylase (TH) is the rate-limiting enzyme in the synthesis of the catecholamines dopamine and norepinephrine. TH antibodies can therefore be used as markers for dopaminergic and noradrenergic neurons in a variety of applications including depression, schizophrenia, Parkinson's disease and drug abuse (Kish et al., 2001; Zhu et al., 2000; Zhu et al., 1999). TH antibodies can also be used to explore basic mechanisms of dopamine and norepinephrine signaling (Witkovsky et al., 2000; Salvatore et al., 2001; Dunkley et al., 2004).