

L-Selectin/CD62L Antibody
Rabbit Polyclonal Antibody
Catalog # ABV10476**Specification**

L-Selectin/CD62L Antibody - Product Information

Application	WB
Primary Accession	P14151
Reactivity	Human, Mouse, Rat
Host	Rabbit
Clonality	Polyclonal
Isotype	Rabbit IgG
Calculated MW	42187

L-Selectin/CD62L Antibody - Additional Information**Gene ID** 6402

Application & Usage	Western blotting (0.5-4 µg/ml), immunoprecipitation (10-20 µg/ml) and Immunohistochemistry (10-20 µg/ml). However, the optimal concentrations should be determined individually. The antibody recognizes L-Selectin in human sample, and in a lesser extent to mouse, and rat samples.
---------------------	--

Other Names

SELL , Lymphocyte adhesion molecule 1

Target/Specificity

L-Selectin

Antibody Form

Liquid

Appearance

Colorless liquid

Formulation

100 µg (0.5mg/ml) protein A purified rabbit anti-L-Selectin polyclonal antibody in phosphate-buffered saline (PBS) containing 30% glycerol, 0.5% BSA, and 0.01% thimerosal.

Handling

The antibody solution should be gently mixed before use.

Reconstitution & Storage

-20 °C

Background Descriptions

Precautions

L-Selectin/CD62L Antibody is for research use only and not for use in diagnostic or therapeutic procedures.

L-Selectin/CD62L Antibody - Protein Information

Name SELL

Synonyms LNHR, LYAM1

Function

Calcium-dependent lectin that mediates cell adhesion by binding to glycoproteins on neighboring cells (PubMed:12403782, PubMed:28489325, PubMed:28011641). Mediates the adherence of lymphocytes to endothelial cells of high endothelial venules in peripheral lymph nodes. Promotes initial tethering and rolling of leukocytes in endothelia (PubMed:12403782, PubMed:28011641).

Cellular Location

Cell membrane; Single-pass type I membrane protein

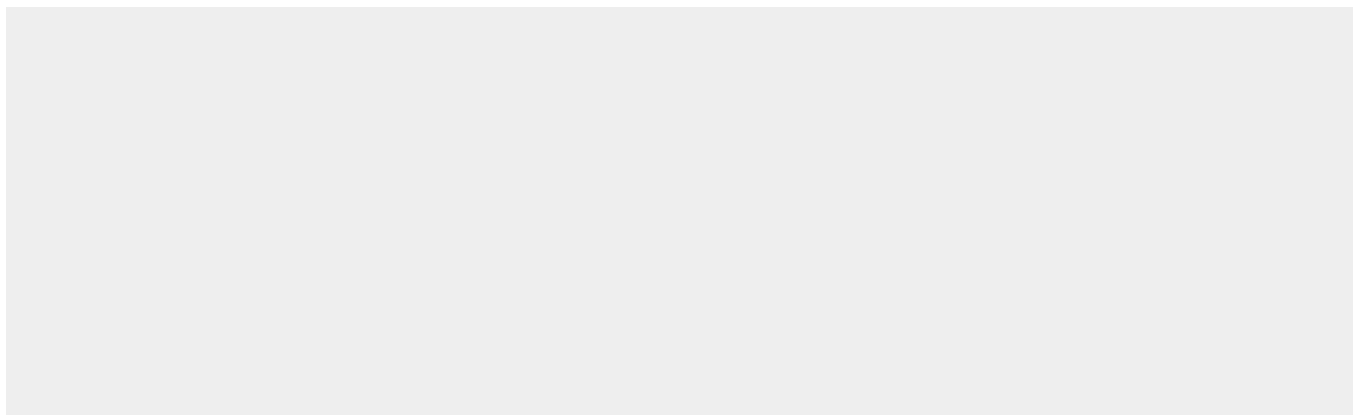
Tissue Location

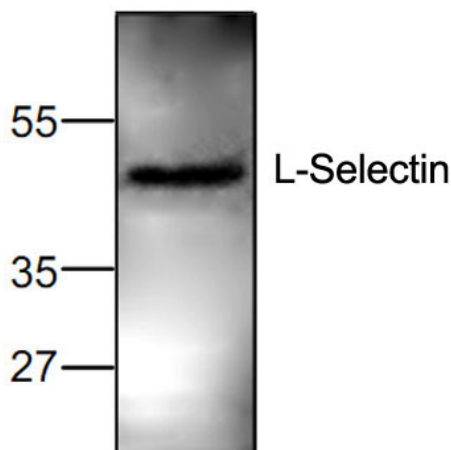
Expressed in B-cell lines and T-lymphocytes.

L-Selectin/CD62L Antibody - Protocols

Provided below are standard protocols that you may find useful for product applications.

- [Western Blot](#)
- [Blocking Peptides](#)
- [Dot Blot](#)
- [Immunohistochemistry](#)
- [Immunofluorescence](#)
- [Immunoprecipitation](#)
- [Flow Cytometry](#)
- [Cell Culture](#)

L-Selectin/CD62L Antibody - Images



Western blot analysis of L-Selectin expression in Jurkat cell lysate.

L-Selectin/CD62L Antibody - Background

Selectins are a family of carbohydrate-binding proteins involved in mediating cellular interactions with leukocytes. E-Selectin (also called ELMA-1) expressed on endothelial cells. L-Selectin (also called LECAM-1) is expressed on the majority of B and naïve T cells and on most monocytes, neutrophils and eosinophils. P-Selectin (also called GMP-140) expressed on activated platelets and endothelial cells. Selectins interact with specific carbohydrates expressed by activated endothelial cells, monocytes, and neutrophils.