

Syndecan-1 Antibody
Rabbit Polyclonal Antibody
Catalog # ABV10485**Specification**

Syndecan-1 Antibody - Product Information

Application	WB
Primary Accession	P18827
Reactivity	Human, Mouse, Rat, Hamster
Host	Rabbit
Clonality	Polyclonal
Isotype	Rabbit IgG
Calculated MW	32462

Syndecan-1 Antibody - Additional Information**Gene ID** 6382

Application & Usage	Western blotting (0.5-4 µg/ml), However, the optimal conditions should be determined individually. Other applications have not been tested. The antibody detects ~100 kDa Syndecan-1 from samples of human, mouse, rat, and hamster origins. Cross-reactivity to other species has not been determined.
---------------------	---

Other Names

SYND1 , SYND 1 , SDC1 , CD138 , CD138 , CD 138 , Syndecan1 , Syndecan 1 , SDC

Target/Specificity

Syndecan-1

Antibody Form

Liquid

Appearance

Colorless liquid

Formulation

100 µg (0.5 mg/ml) affinity purified rabbit anti-Syndecan-1 polyclonal antibody in phosphate buffered saline (PBS), pH 7.2, containing 30% glycerol, 0.5% BSA, 0.01% thimerosal.

Handling

The antibody solution should be gently mixed before use.

Reconstitution & Storage

-20 °C

Background Descriptions

Precautions

Syndecan-1 Antibody is for research use only and not for use in diagnostic or therapeutic procedures.

Syndecan-1 Antibody - Protein Information

Name SDC1 ([HGNC:10658](#))

Synonyms SDC

Function

Cell surface proteoglycan that contains both heparan sulfate and chondroitin sulfate and that links the cytoskeleton to the interstitial matrix (By similarity). Regulates exosome biogenesis in concert with SDCBP and PDCD6IP (PubMed:22660413). Able to induce its own expression in dental mesenchymal cells and also in the neighboring dental epithelial cells via an MSX1-mediated pathway (By similarity).

Cellular Location

Membrane; Single-pass type I membrane protein. Secreted Secreted, extracellular exosome
Note=Shedding of the ectodomain produces a soluble form

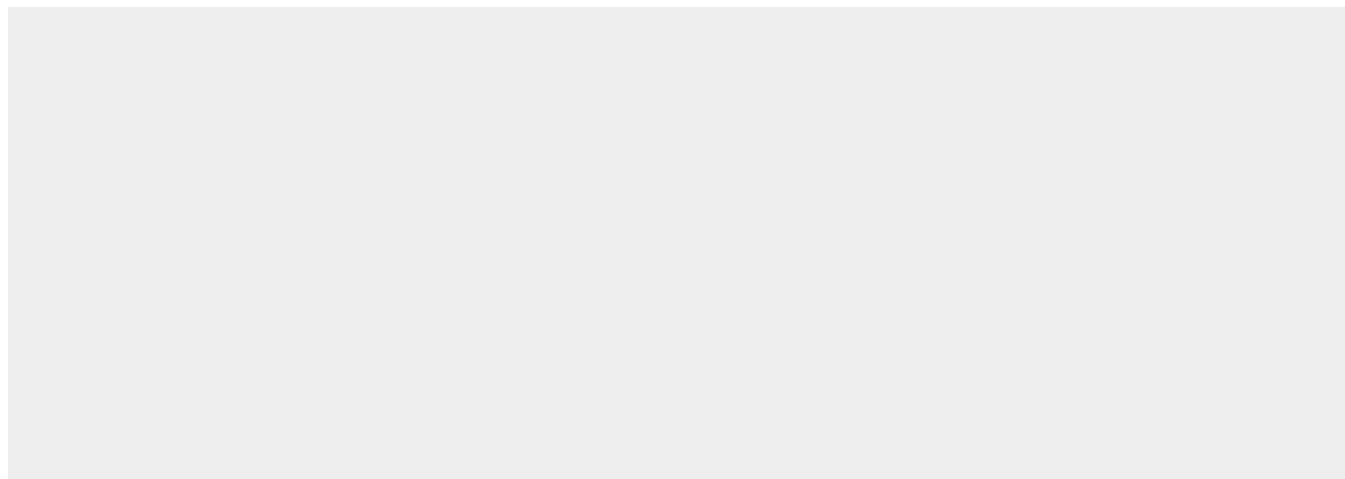
Tissue Location

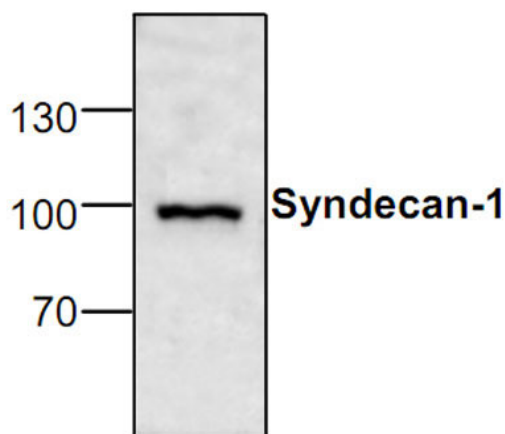
Detected in placenta (at protein level) (PubMed:32337544). Detected in fibroblasts (at protein level) (PubMed:36213313).

Syndecan-1 Antibody - Protocols

Provided below are standard protocols that you may find useful for product applications.

- [Western Blot](#)
- [Blocking Peptides](#)
- [Dot Blot](#)
- [Immunohistochemistry](#)
- [Immunofluorescence](#)
- [Immunoprecipitation](#)
- [Flow Cytometry](#)
- [Cell Culture](#)

Syndecan-1 Antibody - Images



Western blot analysis of Syndecan-1 in 3T3 cell lysate.

Syndecan-1 Antibody - Background

Syndecans are type I integral membrane proteoglycans that are involved in cell-extracellular matrix adhesion and growth factor binding. Syndecan-1 is a matrix receptor which binds to Collagens, Fibronectin and Thrombospondin. Syndecan-1 and Syndecan-3 interact with MK (midkine), a growth/differentiation factor involved in embryogenesis. Syndecan-2 is highly expressed at areas of high morphogenetic activity, such as epithelial-mesenchymal interfaces and the prechondrogenic and preosteogenic mesenchymal condensations. Syndecan-4 functions cooperatively with integrins in the processes of cell spreading and focal adhesion assembly.