

**Calsenilin Antibody**  
**Rabbit Polyclonal Antibody**  
**Catalog # ABV10539****Specification**

---

**Calsenilin Antibody - Product Information**

Application	WB
Primary Accession	<a href="#">O9Y2W7</a>
Reactivity	Human, Mouse, Rat
Host	Rabbit
Clonality	Polyclonal
Isotype	Rabbit IgG
Calculated MW	29231

**Calsenilin Antibody - Additional Information****Gene ID** 30818

Application & Usage	Western blotting (2-6 µg/ml). However, the optimal conditions should be determined individually. The antibody detects ~30 kDa Calsenilin in samples from human, mouse, and rat origins. Jurkat cell lysate can be used as a positive control.
---------------------	---

**Other Names**

KCNP3 , CSEN , DREAM , KCHIP3 , Calsenilin , KCHIP3 , MGC18289 , KChIP3

**Target/Specificity**

Calsenilin

**Antibody Form**

Liquid

**Appearance**

Colorless liquid

**Formulation**

100 µg (0.2 mg/ml) Protein A affinity purified rabbit anti-Calsenilin polyclonal antibody in phosphate buffered saline (PBS), pH 7.2, containing 30% glycerol, 0.1% BSA, 0.01% thimerosal.

**Handling**

The antibody solution should be gently mixed before use.

**Reconstitution & Storage**

-20 °C

**Background Descriptions**

**Precautions**

Calsenilin Antibody is for research use only and not for use in diagnostic or therapeutic procedures.

**Calsenilin Antibody - Protein Information**

**Name** KCNIP3

**Synonyms** CSEN, DREAM, KCHIP3

**Function**

Calcium-dependent transcriptional repressor that binds to the DRE element of genes including PDYN and FOS. Affinity for DNA is reduced upon binding to calcium and enhanced by binding to magnesium. Seems to be involved in nociception (By similarity).

**Cellular Location**

Cytoplasm. Cell membrane; Lipid-anchor. Endoplasmic reticulum. Golgi apparatus. Nucleus. Note=Also membrane-bound, associated with the plasma membrane (PubMed:15485870). In the presence of PSEN2 associated with the endoplasmic reticulum and Golgi. The sumoylated form is present only in the nucleus.

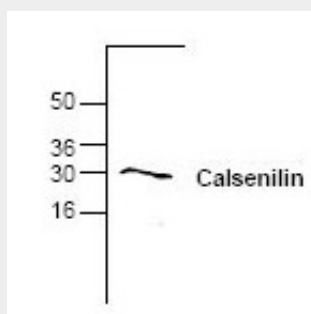
**Tissue Location**

Highly expressed in brain. Widely expressed at lower levels. Expression levels are elevated in brain cortex regions affected by Alzheimer disease.

**Calsenilin Antibody - Protocols**

Provided below are standard protocols that you may find useful for product applications.

- [Western Blot](#)
- [Blocking Peptides](#)
- [Dot Blot](#)
- [Immunohistochemistry](#)
- [Immunofluorescence](#)
- [Immunoprecipitation](#)
- [Flow Cytometry](#)
- [Cell Culture](#)

**Calsenilin Antibody - Images**

Western blot analysis of Calsenilin expression with Jurkat cell lysate.

**Calsenilin Antibody - Background**

Calsenilin is also known as DREAM and KChIP3. Calsenilin interacts with presenilin-2, a protein involved in Alzheimer's disease, to reverse presenilin mediated enhancement of calcium signaling. Calsenilin also has pro-apoptotic function, is a substrate for caspase-3, acts as a calcium regulated transcriptional suppressor, and interacts with A-type potassium channels.