

Cathepsin V Antibody
Rabbit Polyclonal Antibody
Catalog # ABV10545**Specification**

Cathepsin V Antibody - Product Information

Application	WB
Primary Accession	O60911
Reactivity	Human, Mouse, Rat
Host	Rabbit
Clonality	Polyclonal
Isotype	Rabbit IgG
Calculated MW	37329

Cathepsin V Antibody - Additional Information**Gene ID** 1515**Positive Control****Application & Usage**

Western Blot: Jurkat cell lysate and mouse small intestine lysate . **IHC:** Kidney tissue Western blot analysis (0.5-4 µg/ml) and Immunohistochemistry (5 µg/ml). However, the optimal conditions should be determined individually. Jurkat cell lysate and mouse small intestine tissue lysate can be used as positive controls.

Other Names

CATL2 , CATL 2 , CTSL2 , CTSU , CTSV , MGC125957

Target/Specificity

Cathepsin V

Antibody Form

Liquid

Appearance

Colorless liquid

Formulation

100 µg (0.5 mg/ml) affinity purified rabbit polyclonal cathepsin V antibody in phosphate buffered saline (PBS), pH 7.2, containing 30% glycerol, 0.5% BSA, and 0.01% thimerosal.

Handling

The antibody solution should be gently mixed before use.

Reconstitution & Storage

-20 °C

Background Descriptions

Precautions

Cathepsin V Antibody is for research use only and not for use in diagnostic or therapeutic procedures.

Cathepsin V Antibody - Protein Information

Name CTSV

Synonyms CATL2, CTSL2, CTSU

Function

Cysteine protease. May have an important role in corneal physiology.

Cellular Location

Lysosome.

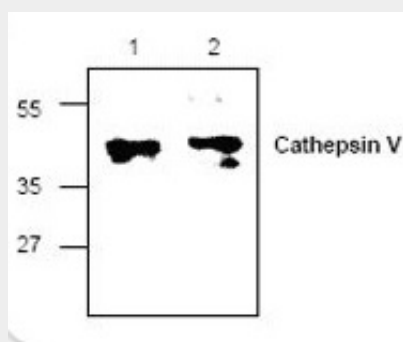
Tissue Location

Predominantly expressed in the thymus and testis. Also expressed in corneal epithelium, and to a lesser extent in conjunctival epithelium and skin.

Cathepsin V Antibody - Protocols

Provided below are standard protocols that you may find useful for product applications.

- [Western Blot](#)
- [Blocking Peptides](#)
- [Dot Blot](#)
- [Immunohistochemistry](#)
- [Immunofluorescence](#)
- [Immunoprecipitation](#)
- [Flow Cytometry](#)
- [Cell Culture](#)

Cathepsin V Antibody - Images

Western blots analysis of Cathepsin V expression in Jurkat (Lane 1) and mouse small intestine (Lane 2) lysate

Cathepsin V Antibody - Background

Cathepsin V, also known as Cathepsin L2 and Cathepsin U, is a cysteine protease of the papain

family. It is expressed as a proenzyme in lysosomes, which can be autocatalytically converted to the mature form at pH 4.0. Cathepsin V is specifically expressed in the thymus, testis, and corneal epithelium.