

GPVI Antibody
Rabbit Polyclonal Antibody
Catalog # ABV10632**Specification**

GPVI Antibody - Product Information

Application	WB
Primary Accession	O9HCN6
Reactivity	Human
Host	Rabbit
Clonality	Polyclonal
Isotype	Rabbit IgG
Calculated MW	36866

GPVI Antibody - Additional Information**Gene ID** 51206**Application & Usage****Western blotting (0.5-4). However, the optimal conditions should be determined individually. The antibody recognizes ~58 kDa human GPVI. Jurkat cell lysate can be used as a positive control.****Other Names**

Glycoprotein VI , glycoprotein 6, GP6 , gp6, gp 6, platelet collagen receptor

Target/Specificity

GPV

Antibody Form

Liquid

Appearance

Colorless liquid

Formulation

100 µg (0.5 mg/ml) affinity purified rabbit polyclonal antibody in phosphate-buffered saline (PBS) containing 30% glycerol, 0.5% BSA, and 0.01% thimerosal.

Handling

The antibody solution should be gently mixed before use.

Reconstitution & Storage

-20 °C

Background Descriptions**Precautions**

GPVI Antibody is for research use only and not for use in diagnostic or therapeutic procedures.

GPVI Antibody - Protein Information

Name GP6 ([HGNC:14388](#))

Function

Collagen receptor involved in collagen-induced platelet adhesion and activation. Plays a key role in platelet procoagulant activity and subsequent thrombin and fibrin formation. This procoagulant function may contribute to arterial and venous thrombus formation. The signaling pathway involves the FcR gamma-chain, the Src kinases (likely FYN or LYN) and SYK, the adapter protein LAT and leads to the activation of PLCG2.

Cellular Location

[Isoform 1]: Cell membrane; Single-pass membrane protein

Tissue Location

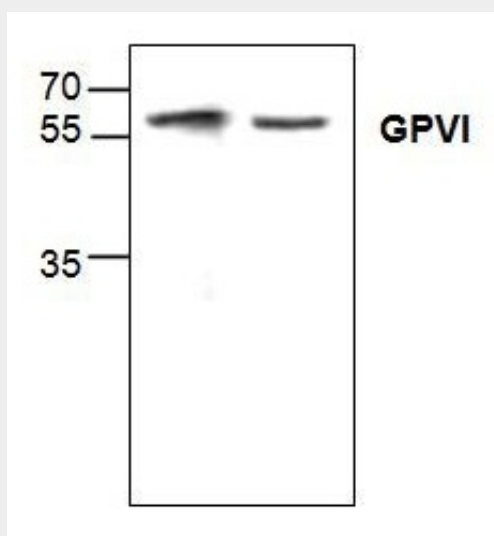
Megakaryocytes and platelets.

GPVI Antibody - Protocols

Provided below are standard protocols that you may find useful for product applications.

- [Western Blot](#)
- [Blocking Peptides](#)
- [Dot Blot](#)
- [Immunohistochemistry](#)
- [Immunofluorescence](#)
- [Immunoprecipitation](#)
- [Flow Cytometry](#)
- [Cell Culture](#)

GPVI Antibody - Images



Western blot analysis of GPVI expression in Jurkat cell lysate (Lane 1, 2).

GPVI Antibody - Background

Glycoprotein VI (GPVI) is a membrane glycoprotein receptor for collagen found in platelets. GPVI plays an important role in platelet procoagulant activity and the formation of thrombin and fibrin.