

**Sox-1 Antibody**  
**Rabbit Polyclonal Antibody**  
**Catalog # ABV10636****Specification**

---

**Sox-1 Antibody - Product Information**

Application	WB
Primary Accession	<a href="#">P53783</a>
Reactivity	Human, Mouse, Rat
Host	Rabbit
Clonality	Polyclonal
Isotype	Rabbit IgG
Calculated MW	39053

**Sox-1 Antibody - Additional Information****Gene ID** 20664

Application & Usage	Western blotting (0.5-4 µg/ml). However, the optimal conditions should be determined individually. The antibody recognizes ~ 43 kDa Sox-1 in samples of human and mouse origins. Reactivity to other species has not been tested.
---------------------	---

**Other Names**

SOX1, SOX 1, sex determining region Y box 1, SRY, SRY-box containing gene 1

**Target/Specificity**

Sox1

**Antibody Form**

Liquid

**Appearance**

Colorless liquid

**Formulation**

100 µg (0.5 mg/ml) affinity purified rabbit anti-Sox-1 polyclonal antibody in phosphate buffered saline (PBS), pH 7.2, containing 30% glycerol, 0.5% BSA, 0.01% thimerosal.

**Handling**

The antibody solution should be gently mixed before use.

**Reconstitution & Storage**

-20 °C

**Background Descriptions****Precautions**

Sox-1 Antibody is for research use only and not for use in diagnostic or therapeutic procedures.

### Sox-1 Antibody - Protein Information

**Name** Sox1

**Synonyms** Sox-1

#### Function

Transcriptional activator. May function as a switch in neuronal development. Keeps neural cells undifferentiated by counteracting the activity of proneural proteins and suppresses neuronal differentiation (By similarity).

#### Cellular Location

Nucleus.

#### Tissue Location

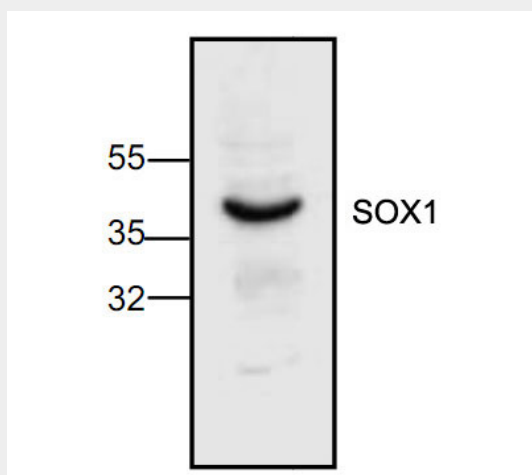
Mainly in the developing central nervous system. Expressed in developing urogenital ridge

### Sox-1 Antibody - Protocols

Provided below are standard protocols that you may find useful for product applications.

- [Western Blot](#)
- [Blocking Peptides](#)
- [Dot Blot](#)
- [Immunohistochemistry](#)
- [Immunofluorescence](#)
- [Immunoprecipitation](#)
- [Flow Cytometry](#)
- [Cell Culture](#)

### Sox-1 Antibody - Images



Western blot analysis of Sox-1 expression in Jurkat cell lysate.

### Sox-1 Antibody - Background

Sox proteins are related to mammalian sex determining gene that encodes DNA-binding protein. About 30 SOX family proteins have been identified. Sox-1 is a transcription factor that is found in the embryonic nervous system. Sox-1 maintains neural cells in an undifferentiated state and has been used as a marker for neural stem cells.