

**Carboxypeptidase A1 (CPA1) Antibody**  
**Rabbit Polyclonal Antibody**  
**Catalog # ABV10639****Specification**

---

**Carboxypeptidase A1 (CPA1) Antibody - Product Information**

Application	WB
Primary Accession	<a href="#">P15085</a>
Reactivity	Human, Mouse, Rat
Host	Rabbit
Clonality	Polyclonal
Isotype	Rabbit IgG
Calculated MW	47140

**Carboxypeptidase A1 (CPA1) Antibody - Additional Information****Gene ID** 1357

Application & Usage	<b>Western blot analysis (0.5-4 µg/ml).</b> <b>However, the optimal conditions should be determined individually.</b>
---------------------	--

**Other Names**  
CPA**Target/Specificity**  
CPA1**Antibody Form**  
Liquid**Appearance**  
Colorless liquid**Formulation**  
100 µg (0.5 mg/ml) affinity purified rabbit anti-Carboxypeptidase A1 polyclonal antibody in phosphate buffered saline (PBS), pH 7.2, containing 30% glycerol, 0.5% BSA, and 0.01% thimerosal.**Handling**  
The antibody solution should be gently mixed before use.**Reconstitution & Storage**  
-20 °C**Background Descriptions****Precautions**  
Carboxypeptidase A1 (CPA1) Antibody is for research use only and not for use in diagnostic or therapeutic procedures.

## Carboxypeptidase A1 (CPA1) Antibody - Protein Information

**Name** CPA1 ([HGNC:2296](#))

**Synonyms** CPA

### Function

Carboxypeptidase that catalyzes the release of a C-terminal amino acid, but has little or no action with -Asp, -Glu, -Arg, -Lys or -Pro (PubMed:<a href="http://www.uniprot.org/citations/8806703" target="\_blank">8806703</a>). Catalyzes the conversion of leukotriene C4 to leukotriene F4 via the hydrolysis of an amide bond (By similarity).

### Cellular Location

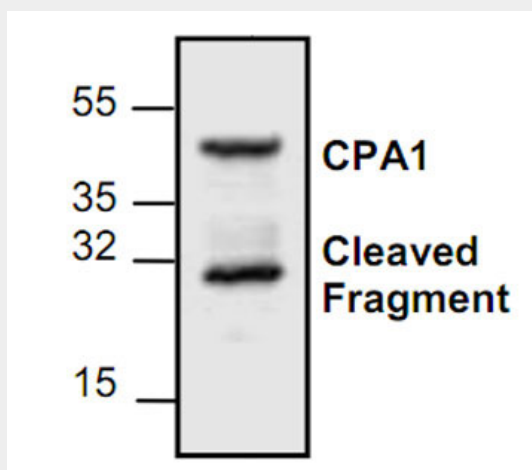
Secreted.

## Carboxypeptidase A1 (CPA1) Antibody - Protocols

Provided below are standard protocols that you may find useful for product applications.

- [Western Blot](#)
- [Blocking Peptides](#)
- [Dot Blot](#)
- [Immunohistochemistry](#)
- [Immunofluorescence](#)
- [Immunoprecipitation](#)
- [Flow Cytometry](#)
- [Cell Culture](#)

## Carboxypeptidase A1 (CPA1) Antibody - Images



Western blot analysis of CPA1 expression in Jurkat cell lysate

## Carboxypeptidase A1 (CPA1) Antibody - Background

Carboxypeptidase A1 (CPA1) is a pancreatic peptidase that comes from the precursor form of inactive procarboxypeptidase. Carboxypeptidase A1 is a monomeric pancreatic exopeptidase that involved in zymogen inhibition.