

EMP-3 Antibody
Rabbit Polyclonal Antibody
Catalog # ABV10711**Specification**

EMP-3 Antibody - Product Information

Application	WB
Primary Accession	P54852
Reactivity	Human, Mouse, Rat
Host	Rabbit
Clonality	Polyclonal
Isotype	Rabbit IgG
Calculated MW	18429

EMP-3 Antibody - Additional Information**Gene ID** 2014

Application & Usage	Western blot analysis (0.5-4 µg/ml). However, the optimal conditions should be determined individually. Due to glycosylation, the antibody detects higher molecular weight bands (~32 kDa) than predicted 18 kDa band.
---------------------	---

Other Names

Epithelial membrane protein 3 antibody Hematopoietic neural membrane protein 1 antibody
Hematopoietic neural membrane protein antibody HGNC:3335 antibody HNMP 1, YMP

Target/Specificity

EMP-3

Antibody Form

Liquid

Appearance

Colorless liquid

Formulation

100 µg (0.5 mg/ml) affinity purified rabbit anti-rat EMP3 polyclonal antibody in phosphate buffered saline (PBS), pH 7.2, containing 30% glycerol, 0.5% BSA, and 0.01% thimerosal.

Handling

The antibody solution should be gently mixed before use.

Reconstitution & Storage

-20 °C

Background Descriptions

Precautions

EMP-3 Antibody is for research use only and not for use in diagnostic or therapeutic procedures.

EMP-3 Antibody - Protein Information

Name EMP3

Synonyms YMP

Function

Probably involved in cell proliferation and cell-cell interactions.

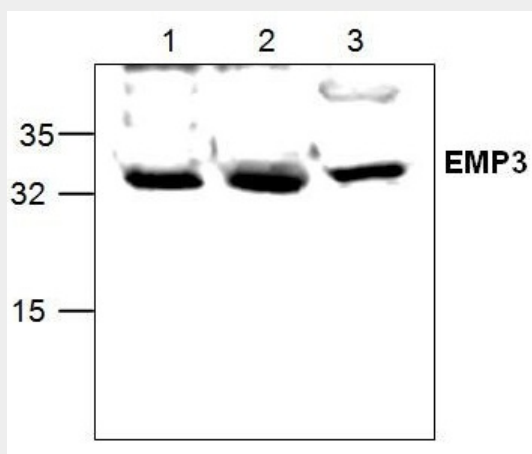
Cellular Location

Membrane; Multi-pass membrane protein.

EMP-3 Antibody - Protocols

Provided below are standard protocols that you may find useful for product applications.

- [Western Blot](#)
- [Blocking Peptides](#)
- [Dot Blot](#)
- [Immunohistochemistry](#)
- [Immunofluorescence](#)
- [Immunoprecipitation](#)
- [Flow Cytometry](#)
- [Cell Culture](#)

EMP-3 Antibody - Images

Western blot analysis of EMP3 using Jurkat cell lysate (Lane 1 & 2) and in 3T3 cell lysate (Lane 2)

EMP-3 Antibody - Background

Epithelial membrane protein 3 (EMP3) is a multi pass membrane protein that has two N-glycosylation and four transmembrane domain. EMP3 is a myelin-related protein involves in cell-cell interactions and cell proliferation. Over-expression of EMP3 may indicate carcinogenesis or the development of oligodendroglial tumors.