

ICAM-2 Antibody
Rabbit Polyclonal Antibody
Catalog # ABV10714**Specification**

ICAM-2 Antibody - Product Information

Application	WB
Primary Accession	P35330
Reactivity	Human, Mouse, Rat
Host	Rabbit
Clonality	Polyclonal
Isotype	Rabbit IgG
Calculated MW	31390

ICAM-2 Antibody - Additional Information**Gene ID** 15896

Positive Control

Application & Usage

Western Blot: Jurkat cell lysate and 3T3 cell lysate. **IHC:** spleen tissue **Western blotting** (0.5-4 µg/ml) and **Immunohistochemistry** (5 µg/ml). It detects multiple isoforms of ICAM-2. However, the optimal concentrations should be determined individually.

Other Names

ICAM1 , P3.58 , BB2 , CD54

Target/Specificity

ICAM-2

Antibody Form

Liquid

Appearance

Colorless liquid

Formulation

100 µg (0.5mg/ml) affinity purified rabbit polyclonal antibody in phosphate-buffered saline (PBS) containing 30% glycerol, 0.5% BSA and 0.01% thimerosal.

Handling

The antibody solution should be gently mixed before use.

Reconstitution & Storage

-20 °C

Background Descriptions

Precautions

ICAM-2 Antibody is for research use only and not for use in diagnostic or therapeutic procedures.

ICAM-2 Antibody - Protein Information

Name Icam2

Synonyms Icam-2

Function

ICAM proteins are ligands for the leukocyte adhesion protein LFA-1 (integrin alpha-L/beta-2). ICAM2 may play a role in lymphocyte recirculation by blocking LFA-1-dependent cell adhesion. It mediates adhesive interactions important for antigen-specific immune response, NK-cell mediated clearance, lymphocyte recirculation, and other cellular interactions important for immune response and surveillance.

Cellular Location

Membrane; Single-pass type I membrane protein. Cell projection, microvillus. Note=Co-localizes with RDX, EZR and MSN in microvilli.

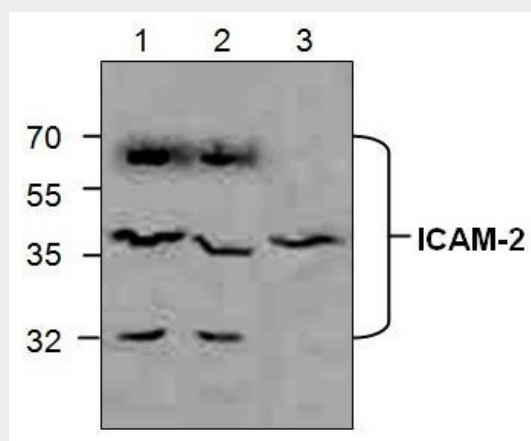
Tissue Location

Expressed in endothelial cells and leukocytes. High levels found in lung

ICAM-2 Antibody - Protocols

Provided below are standard protocols that you may find useful for product applications.

- [Western Blot](#)
- [Blocking Peptides](#)
- [Dot Blot](#)
- [Immunohistochemistry](#)
- [Immunofluorescence](#)
- [Immunoprecipitation](#)
- [Flow Cytometry](#)
- [Cell Culture](#)

ICAM-2 Antibody - Images

Western blot analysis of ICAM-2 in lysates from Jurkat cells (Lane 1& 2) and 3T3 cells (Lane 3).

ICAM-2 Antibody - Background

Cell adhesion molecules (CAMs) are a family of closely related cell surface glycoproteins involved in cell-cell interactions during growth and are thought to play an important role in embryogenesis and development. The family contains NCAM (for neuronal cell adhesion molecule), ICAM (for intercellular adhesion molecule), VCAM (vascular cell adhesion molecule), PECAM-1 (platelet/endothelial cell adhesion molecule-1), etc. ICAM-2 is involved in lymphocyte recirculation by blocking LFA-1-dependent cell adhesion.