

**TLR10 Antibody**  
**Rabbit Polyclonal Antibody**  
**Catalog # ABV10720****Specification**

---

**TLR10 Antibody - Product Information**

Application	WB
Primary Accession	<a href="#">Q9BXR5</a>
Other Accession	<a href="#">BAF84715</a>
Reactivity	Human, Mouse, Rat, Bovine
Host	Rabbit
Clonality	Polyclonal
Isotype	Rabbit IgG
Calculated MW	94564

**TLR10 Antibody - Additional Information****Gene ID** 81793**Application & Usage**

Western blotting (0.5-4 µg/ml). However, the optimal conditions should be determined individually. The antibody recognizes ~75 kDa and 94 kDa isoforms of TLR10 in Jurkat cell lysate. Reactivity to other species has not been tested.

**Other Names**

Toll-like receptor 10

**Target/Specificity**

TLR10

**Antibody Form**

Liquid

**Appearance**

Colorless liquid

**Formulation**

100 µg (0.5 mg/ml) affinity purified rabbit polyclonal antibody in phosphate-buffered saline (PBS), pH 7.2, containing 30% glycerol, 0.5% BSA, and 0.01% thimerosal.

**Handling**

The antibody solution should be gently mixed before use.

**Reconstitution & Storage**

-20 °C

**Background Descriptions**

**Precautions**

TLR10 Antibody is for research use only and not for use in diagnostic or therapeutic procedures.

**TLR10 Antibody - Protein Information**

**Name** TLR10

**Function**

Participates in the innate immune response to microbial agents. Acts via MYD88 and TRAF6, leading to NF-kappa-B activation, cytokine secretion and the inflammatory response (By similarity).

**Cellular Location**

Membrane; Single-pass type I membrane protein

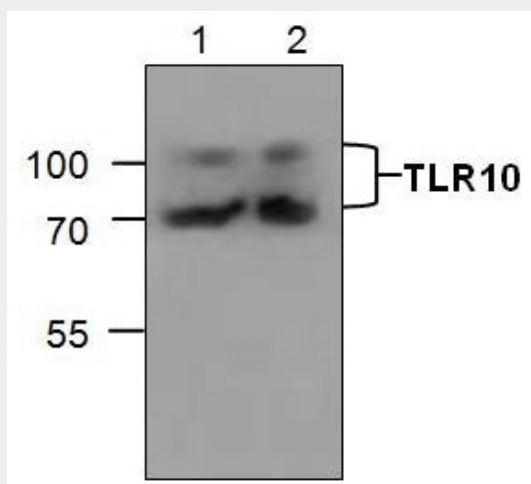
**Tissue Location**

Highly expressed in spleen, lymph node, thymus, tonsil and at lower levels in lung. Highly expressed in promyelocytic HL-60 cells and in B-cell lines

**TLR10 Antibody - Protocols**

Provided below are standard protocols that you may find useful for product applications.

- [Western Blot](#)
- [Blocking Peptides](#)
- [Dot Blot](#)
- [Immunohistochemistry](#)
- [Immunofluorescence](#)
- [Immunoprecipitation](#)
- [Flow Cytometry](#)
- [Cell Culture](#)

**TLR10 Antibody - Images**

Western blot analysis of TLR10 expression in Jurkat cell lysate (Lane 1 & 2).

**TLR10 Antibody - Background**

The Toll-like receptor (TLR) family of proteins are characterized by a highly conserved Toll homology (TH) domain, which is essential for Toll-induced signal transduction. TLRs require adapter molecule such as MyD88 and TIRAP to activate various kinases and transcription factors. TLR10 is homologous to TLRs 1 and 6 and is highly expressed in the lymphoid tissues.