

BDNF Antibody
Rabbit Polyclonal Antibody
Catalog # ABV10771**Specification**

BDNF Antibody - Product Information

Application	WB
Primary Accession	P23560
Reactivity	Human
Host	Rabbit
Clonality	Polyclonal
Isotype	Rabbit IgG
Calculated MW	27818

BDNF Antibody - Additional Information**Gene ID 627**

Application & Usage	Western blot analysis (0.5-4 µg/ml). However, the optimal conditions should be determined individually. Other applications have not been tested. Recombinant human BDNF can be used as a positive control.
---------------------	---

Other Names

brain-derived neurotrophic factor, brain derived neurotrophic factor

Target/Specificity

BDNF

Antibody Form

Liquid

Appearance

Colorless liquid

Formulation

100 µg (0.5 mg/ml) affinity purified rabbit anti-human BDNF polyclonal antibody in phosphate buffered saline (PBS), pH 7.2, containing 30% glycerol, 0.5% BSA and 0.01% thimerosal.

Handling

The antibody solution should be gently mixed before use.

Reconstitution & Storage

-20 °C

Background Descriptions**Precautions**

BDNF Antibody is for research use only and not for use in diagnostic or therapeutic procedures.

BDNF Antibody - Protein Information

Name BDNF {ECO:0000303|PubMed:28397838, ECO:0000312|HGNC:HGNC:1033}

Function

Important signaling molecule that activates signaling cascades downstream of NTRK2 (PubMed:11152678). During development, promotes the survival and differentiation of selected neuronal populations of the peripheral and central nervous systems. Participates in axonal growth, pathfinding and in the modulation of dendritic growth and morphology. Major regulator of synaptic transmission and plasticity at adult synapses in many regions of the CNS. The versatility of BDNF is emphasized by its contribution to a range of adaptive neuronal responses including long-term potentiation (LTP), long-term depression (LTD), certain forms of short-term synaptic plasticity, as well as homeostatic regulation of intrinsic neuronal excitability.

Cellular Location

Secreted

Tissue Location

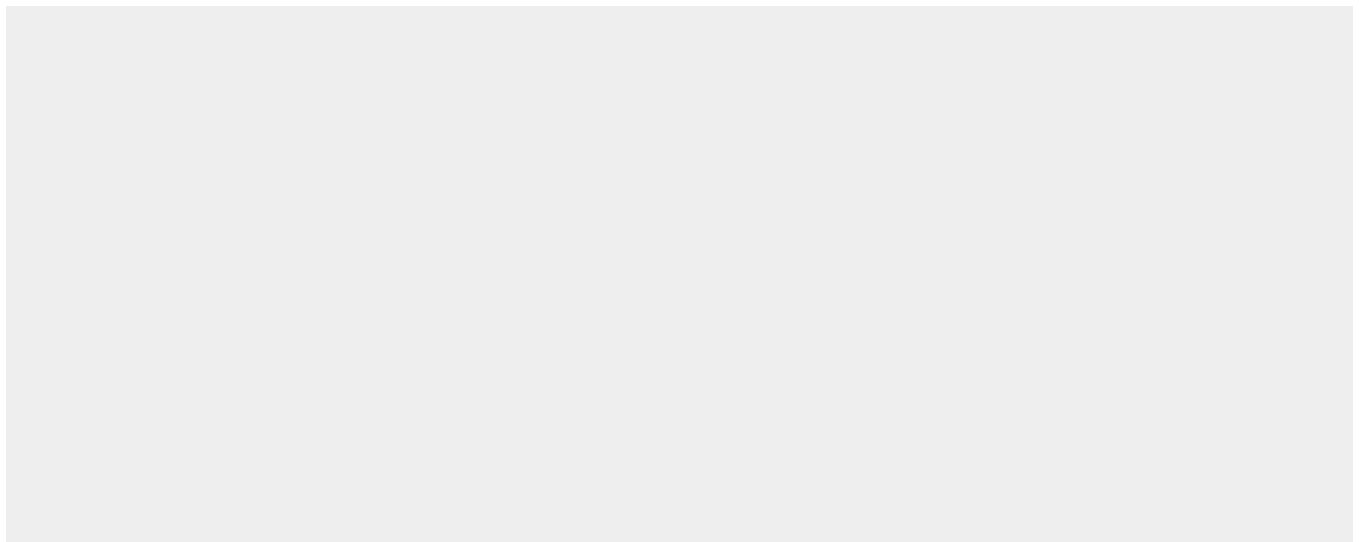
Detected in blood plasma and in saliva (at protein level) (PubMed:11152678, PubMed:19467646). Brain. Highly expressed in hippocampus, amygdala, cerebral cortex and cerebellum. Also expressed in heart, lung, skeletal muscle, testis, prostate and placenta

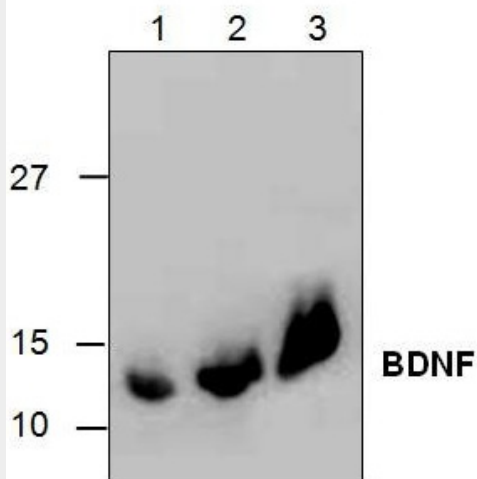
BDNF Antibody - Protocols

Provided below are standard protocols that you may find useful for product applications.

- [Western Blot](#)
- [Blocking Peptides](#)
- [Dot Blot](#)
- [Immunohistochemistry](#)
- [Immunofluorescence](#)
- [Immunoprecipitation](#)
- [Flow Cytometry](#)
- [Cell Culture](#)

BDNF Antibody - Images





Western blot analysis of BDNF using recombinant human BDNF. Lane 1: 20 ng; Lane 2: 50 ng; Lane 3: 100 ng

BDNF Antibody - Background

Human Brain-Derived Neurotrophic Factor (BDNF) is a potent neurotrophic factor that supports the growth and survivability of nerve and glial cells. BDNF protein is a 27.0 kDa dimer, formed by two identical 119 amino acid subunits held together by strong hydrophobic interactions. The antibody recognizes the mature form of BDNF at 14 kDa.