

Jacalin Antibody
Rabbit Polyclonal Antibody
Catalog # ABV10772**Specification**

Jacalin Antibody - Product Information

Application	WB
Reactivity	All Species
Host	Rabbit
Clonality	Polyclonal
Isotype	Rabbit IgG

Jacalin Antibody - Additional Information

Positive Control	Jacalin protein
Application & Usage	Western Blot analysis (1-4 µg/ml). However, the optimal concentrations should be determined individually.

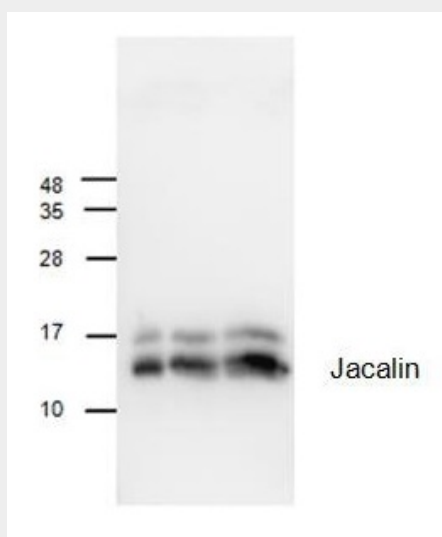
Other Names
Jackfruit protein**Target/Specificity**
Jacalin**Antibody Form**
Liquid**Appearance**
Colorless liquid**Formulation**
100 µg (0.5 mg/ml) affinity purified rabbit anti-human BDNF polyclonal antibody in phosphate buffered saline (PBS), pH 7.2, containing 30% glycerol, 0.5% BSA and 0.01% thimerosal.**Handling**
The antibody solution should be gently mixed before use.**Reconstitution & Storage**
-20 °C**Background Descriptions****Precautions**
Jacalin Antibody is for research use only and not for use in diagnostic or therapeutic procedures.**Jacalin Antibody - Protein Information**

Jacalin Antibody - Protocols

Provided below are standard protocols that you may find useful for product applications.

- [Western Blot](#)
- [Blocking Peptides](#)
- [Dot Blot](#)
- [Immunohistochemistry](#)
- [Immunofluorescence](#)
- [Immunoprecipitation](#)
- [Flow Cytometry](#)
- [Cell Culture](#)

Jacalin Antibody - Images



Western blot analysis of Jacalin. Lane 1: 70 ng; Lane 2: 140 ng; Lane 3: 210 ng

Jacalin Antibody - Background

Jacalin is a plant based lectin, found in jackfruit. It has been studied for capturing O-glycoproteins such as mucins and IgA1, for potential applications in human immunology. Jacalin has a tetrameric two-chain structure with a weight of 66 kDa. with two non-covalently bound subunits at 14.6 and 17.1 kDa. Jacalin is preferably used in applications to isolate IgA from human serum, isolating human plasma glycoproteins and for applications in histochemistry.