

CT-1 Antibody
Rabbit Polyclonal Antibody
Catalog # ABV10775**Specification**

CT-1 Antibody - Product Information

Application	WB
Primary Accession	Q16619
Reactivity	Human
Host	Rabbit
Clonality	Polyclonal
Isotype	Rabbit IgG
Calculated MW	21227

CT-1 Antibody - Additional Information**Gene ID** 1489Positive Control
Application & Usage**Recombinant human CT-1**
Western Blot analysis (1-4 µg/ml).
However, the optimal conditions should be
determined individually. Recombinant
human CT-1 can be used as a positive
control.**Other Names**
Cardiotrophin-1**Target/Specificity**
CT-1**Antibody Form**
Liquid**Appearance**
Colorless liquid**Formulation**
100 µg (0.5 mg/ml) affinity purified rabbit anti-human CT-1 polyclonal antibody in phosphate buffered saline (PBS), pH 7.2, containing 30% glycerol, 0.5% BSA, 5mM EDTA and 0.01% thimerosal.**Handling**
The antibody solution should be gently mixed before use.**Reconstitution & Storage**
-20 °C**Background Descriptions**

Precautions

CT-1 Antibody is for research use only and not for use in diagnostic or therapeutic procedures.

CT-1 Antibody - Protein Information

Name CTF1

Function

Induces cardiac myocyte hypertrophy in vitro. Binds to and activates the ILST/gp130 receptor.

Cellular Location

Secreted.

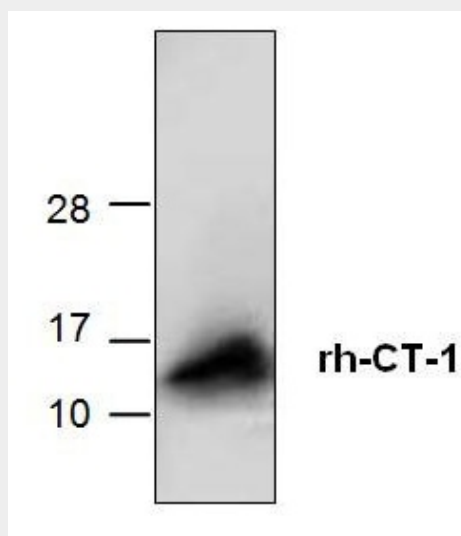
Tissue Location

Highly expressed in heart, skeletal muscle, prostate and ovary. Lower levels in lung, kidney, pancreas, thymus, testis and small intestine. Little or no expression in brain, placenta, liver, spleen, colon or peripheral blood leukocytes

CT-1 Antibody - Protocols

Provided below are standard protocols that you may find useful for product applications.

- [Western Blot](#)
- [Blocking Peptides](#)
- [Dot Blot](#)
- [Immunohistochemistry](#)
- [Immunofluorescence](#)
- [Immunoprecipitation](#)
- [Flow Cytometry](#)
- [Cell Culture](#)

CT-1 Antibody - Images

Western blot of recombinant human CT-1.

CT-1 Antibody - Background

Human Cardiotrophin-1 (CT-1) is a member of the leukemia inhibitory/ciliary neurotrophic factor/Oncostatin M/interleukin-6/interleukin-11 family of cytokines. Cardiotrophin-1 affects cells through interaction with the gp 130 receptor subunit. Recombinant human Cardiotrophin-1 is a 22.5 kDa protein containing 200 amino acid residues.