

FGF-2 Antibody
Rabbit Polyclonal Antibody
Catalog # ABV10786**Specification**

FGF-2 Antibody - Product Information

Application	WB
Primary Accession	P09038
Other Accession	NP_001997
Reactivity	Human
Host	Rabbit
Clonality	Polyclonal
Isotype	Rabbit IgG
Calculated MW	30770

FGF-2 Antibody - Additional Information**Gene ID 2247**

Application & Usage	Western blot analysis (0.5-4 µg/ml). However, the optimal conditions should be determined individually.
---------------------	--

Other Names

FGF2, FGF-2, FGF 2, Fibroblast Growth Factor 2, FGF 2, FGF2, Heparin-binding growth factor 2, HBGF-2, Basic fibroblast growth factor, bFGF, Putative heparin-binding growth factor 2, Kidney-derived growth factor

Target/Specificity

FGF-2

Antibody Form

Liquid

Appearance

Colorless liquid

Formulation

100 µg (0.5 mg/ml) affinity purified rabbit anti-human FGF-2 polyclonal antibody in phosphate buffered saline (PBS), pH 7.2, containing 30% glycerol, 0.5% BSA and 0.01% thimerosal.

Handling

The antibody solution should be gently mixed before use.

Reconstitution & Storage

-20 °C

Background Descriptions**Precautions**

FGF-2 Antibody is for research use only and not for use in diagnostic or therapeutic procedures.

FGF-2 Antibody - Protein Information

Name FGF2

Synonyms FGFB

Function

Acts as a ligand for FGFR1, FGFR2, FGFR3 and FGFR4 (PubMed:8663044). Also acts as an integrin ligand which is required for FGF2 signaling (PubMed:28302677). Binds to integrin ITGAV:ITGB3 (PubMed:28302677). Plays an important role in the regulation of cell survival, cell division, cell differentiation and cell migration (PubMed:8663044, PubMed:28302677). Functions as a potent mitogen in vitro (PubMed:1721615, PubMed:3964259, PubMed:3732516). Can induce angiogenesis (PubMed:23469107, PubMed:28302677). Mediates phosphorylation of ERK1/2 and thereby promotes retinal lens fiber differentiation (PubMed:29501879).

Cellular Location

Secreted. Nucleus. Note=Exported from cells by an endoplasmic reticulum (ER)/Golgi-independent mechanism. Unconventional secretion of FGF2 occurs by direct translocation across the plasma membrane (PubMed:20230531). Binding of exogenous FGF2 to FGFR facilitates endocytosis followed by translocation of FGF2 across endosomal membrane into the cytosol (PubMed:22321063). Nuclear import from the cytosol requires the classical nuclear import machinery, involving proteins KPNA1 and KPNB1, as well as CEP57 (PubMed:22321063)

Tissue Location

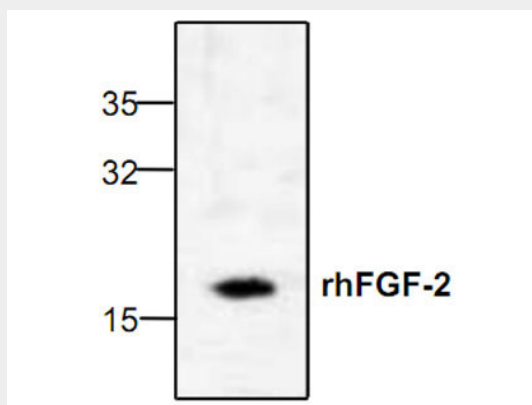
Expressed in granulosa and cumulus cells. Expressed in hepatocellular carcinoma cells, but not in non-cancerous liver tissue.

FGF-2 Antibody - Protocols

Provided below are standard protocols that you may find useful for product applications.

- [Western Blot](#)
- [Blocking Peptides](#)
- [Dot Blot](#)
- [Immunohistochemistry](#)
- [Immunofluorescence](#)
- [Immunoprecipitation](#)
- [Flow Cytometry](#)
- [Cell Culture](#)

FGF-2 Antibody - Images



Western blot analysis with 50 ng recombinant human FGF-2.

FGF-2 Antibody - Background

FGF-2 is a basic heparin binding growth factor that stimulates the proliferation of a wide variety of cells including mesenchymal, neuroectodermal and endothelial cells. Human FGF-2 is a 17.2 kDa protein containing 154 amino acid residues.