

GM-CSF Antibody
Rabbit Polyclonal Antibody
Catalog # ABV10830**Specification**

GM-CSF Antibody - Product Information

Application	E
Primary Accession	P01587
Other Accession	CAA26193
Reactivity	Mouse
Host	Rabbit
Clonality	Polyclonal
Isotype	Rabbit IgG
Calculated MW	16091

GM-CSF Antibody - Additional Information**Gene ID** 12981Positive Control
Application & Usage

ELISA: Recombinant mGM-CSF
1) WB: Use 0.1-0.2 µg/ml. The detection limit for recombinant mGM-CSF is 1.5-3.0 ng/lane, under either reducing or non-reducing conditions.
2) ELISA: Use 0.5 - 2.0 µg/ml (100 µl/well antibody solution)
3) Neutralization: To yield one-half maximal inhibition [ND50] of the biological activity of mGM-CSF (0.60 ng/ml), a concentration of 0.012-0.020 µg/ml of this antibody is required

Other Names

CSF-2, MGI-1GM, GM-CSF, Pluripoietin-alpha, Molgramostin, MGC131935

Target/Specificity

GM-CSF

Antibody Form

Liquid

Appearance

Liquid

Formulation

A sterile filtered antibody solution in PBS, pH 7.2.

Handling

The antibody solution should be gently mixed before use.

Reconstitution & Storage

-20 °C

Background Descriptions

Precautions

GM-CSF Antibody is for research use only and not for use in diagnostic or therapeutic procedures.

GM-CSF Antibody - Protein Information

Name Csf2

Synonyms Csfgm

Function

Cytokine that stimulates the growth and differentiation of hematopoietic precursor cells from various lineages, including granulocytes, macrophages, eosinophils and erythrocytes.

Cellular Location

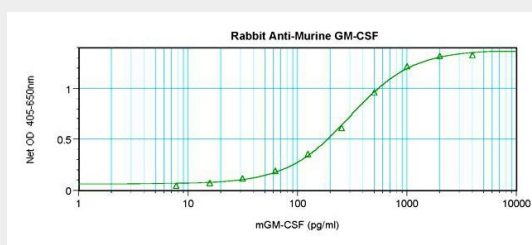
Secreted.

GM-CSF Antibody - Protocols

Provided below are standard protocols that you may find useful for product applications.

- [Western Blot](#)
- [Blocking Peptides](#)
- [Dot Blot](#)
- [Immunohistochemistry](#)
- [Immunofluorescence](#)
- [Immunoprecipitation](#)
- [Flow Cytometry](#)
- [Cell Culture](#)

GM-CSF Antibody - Images



To detect mGM-CSF by sandwich ELISA (using 100 µl/well antibody solution) a concentration of 0.5 - 2.0 µg/ml of this antibody is required. This antibody allows the detection of at least 0.2 - 0.4 ng/well of recombinant mGM-CSF.

GM-CSF Antibody - Background

GM-CSF is a hematopoietic growth factor that stimulates the development of neutrophils and macrophages and promotes the proliferation and development of early erythroid megakaryocytic

and eosinophilic progenitor cells. It is produced in endothelial cells, monocytes, fibroblasts and T-lymphocytes. GM-CSF inhibits neutrophil migration and enhances the functional activity of the mature end-cells. The human and murine molecules are species-specific and exhibit no cross-species reactivity.