

IGF-II Antibody
Rabbit Polyclonal Antibody
Catalog # ABV10843**Specification**

IGF-II Antibody - Product Information

| | |
|-------------------|------------------------------|
| Application | WB |
| Primary Accession | P01344 |
| Other Accession | NP_001121070 |
| Reactivity | Human |
| Host | Rabbit |
| Clonality | Polyclonal |
| Isotype | Rabbit IgG |
| Calculated MW | 20140 |

IGF-II Antibody - Additional Information**Gene ID** 3481**Application & Usage****Western blotting (0.5-4 µg/ml). However, the optimal conditions should be determined individually. Recombinant human IGF-II can be used as a positive control. Other applications have not been determined.****Other Names**

IGF2, IGF-2, IGF 2, Insulin like growth factor-2, Insulin like growth factor 2

Target/Specificity

IGF II

Antibody Form

Liquid

Appearance

Colorless liquid

Formulation

100 µg (0.5 mg/ml) antigen affinity purified rabbit anti-human IGF-II polyclonal antibody in phosphate buffered saline (PBS), pH 7.2, containing 30% glycerol, 0.5% BSA, and 0.01% thimerosal.

Handling

The antibody solution should be gently mixed before use.

Reconstitution & Storage

-20 °C

Background Descriptions

Precautions

IGF-II Antibody is for research use only and not for use in diagnostic or therapeutic procedures.

IGF-II Antibody - Protein Information**Name** IGF2**Function**

The insulin-like growth factors possess growth-promoting activity (By similarity). Major fetal growth hormone in mammals. Plays a key role in regulating fetoplacental development. IGF2 is influenced by placental lactogen. Also involved in tissue differentiation. In adults, involved in glucose metabolism in adipose tissue, skeletal muscle and liver (Probable). Acts as a ligand for integrin which is required for IGF2 signaling (PubMed:28873464). Positively regulates myogenic transcription factor MYOD1 function by facilitating the recruitment of transcriptional coactivators, thereby controlling muscle terminal differentiation (By similarity). Inhibits myoblast differentiation and modulates metabolism via increasing the mitochondrial respiration rate (By similarity).

Cellular Location

Secreted.

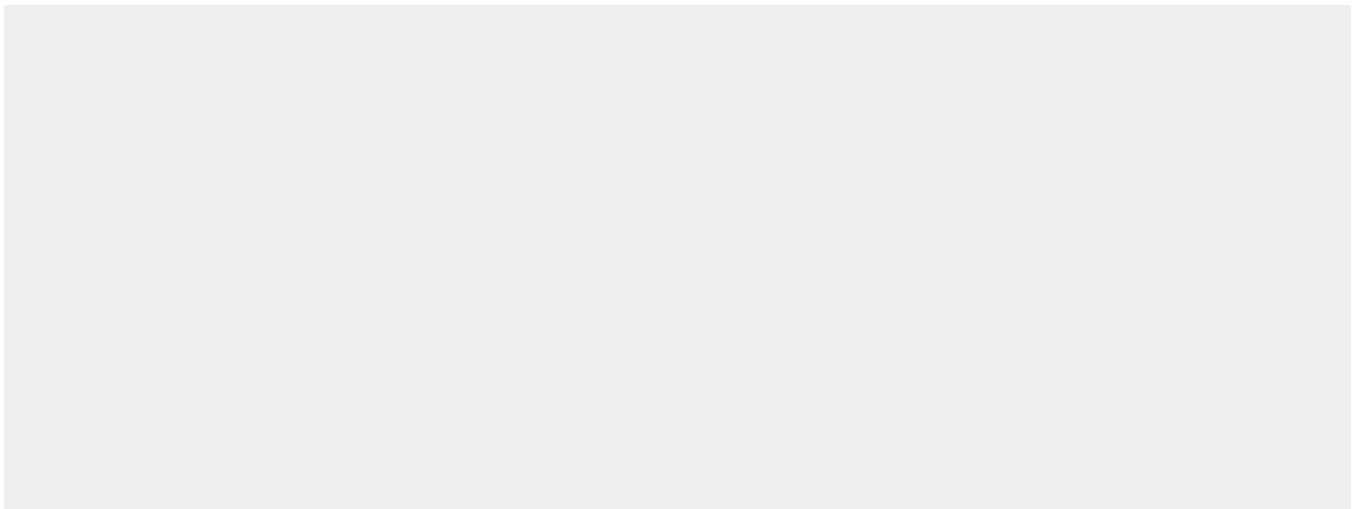
Tissue Location

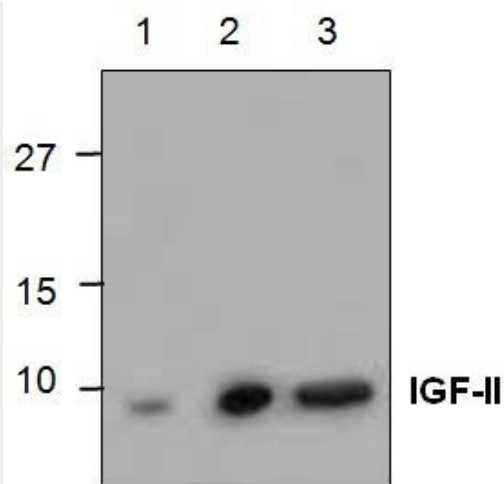
Expressed in heart, placenta, lung, liver, muscle, kidney, tongue, limb, eye and pancreas.

IGF-II Antibody - Protocols

Provided below are standard protocols that you may find useful for product applications.

- [Western Blot](#)
- [Blocking Peptides](#)
- [Dot Blot](#)
- [Immunohistochemistry](#)
- [Immunofluorescence](#)
- [Immunoprecipitation](#)
- [Flow Cytometry](#)
- [Cell Culture](#)

IGF-II Antibody - Images



IGF-II Antibody - Background

IGF-II (Insulin-like Growth Factor-II) is a polypeptide growth factor that stimulates the proliferation of a wide range of cell types. Human IGF-II is a 7.5 kDa protein containing 67 amino acid residues.