

**ApoA1 Antibody**  
**Rabbit Polyclonal Antibody**  
**Catalog # ABV11049****Specification**

---

**ApoA1 Antibody - Product Information**

Application	WB
Primary Accession	<a href="#">P04639</a>
Reactivity	Rat
Host	Rabbit
Clonality	Polyclonal
Isotype	Rabbit IgG
Calculated MW	30062

**ApoA1 Antibody - Additional Information****Gene ID** 25081**Application & Usage**

**Western blotting (0.5-4 µg/ml). However, the optimal concentrations should be determined individually. Recombinant ApoA1 can be used as a positive control. The antibody recognizes ~28 kDa human ApoA1. Reactivity to other species has not been tested.**

**Other Names**

Apolipoprotein A-1, Apo-A1, ApoA-1,

**Target/Specificity**

ApoA1

**Antibody Form**

Liquid

**Appearance**

Colorless liquid

**Formulation**

100 µg (0.5 mg/ml) affinity purified rabbit anti-rat A1 polyclonal antibody in phosphate buffered saline (PBS), pH 7.2, containing 30% glycerol and 0.01% thimerosal.

**Handling**

The antibody solution should be gently mixed before use.

**Reconstitution & Storage**

-20 °C

**Background Descriptions**

**Precautions**

ApoA1 Antibody is for research use only and not for use in diagnostic or therapeutic procedures.

**ApoA1 Antibody - Protein Information**

**Name** ApoA1

**Function**

Participates in the reverse transport of cholesterol from tissues to the liver for excretion by promoting cholesterol efflux from tissues and by acting as a cofactor for the lecithin cholesterol acyltransferase (LCAT). As part of the SPAP complex, activates spermatozoa motility.

**Cellular Location**

Secreted.

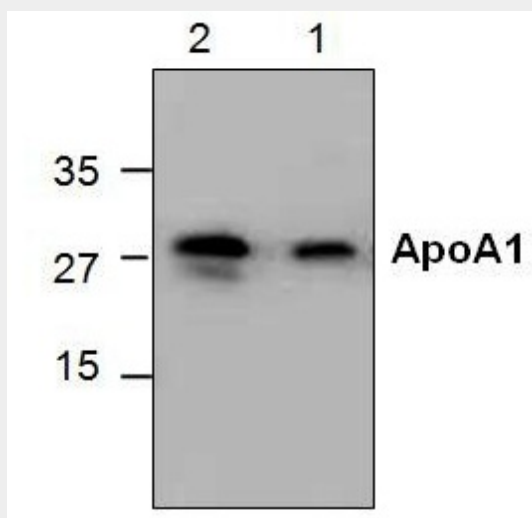
**Tissue Location**

Major protein of plasma HDL, also found in chylomicrons

**ApoA1 Antibody - Protocols**

Provided below are standard protocols that you may find useful for product applications.

- [Western Blot](#)
- [Blocking Peptides](#)
- [Dot Blot](#)
- [Immunohistochemistry](#)
- [Immunofluorescence](#)
- [Immunoprecipitation](#)
- [Flow Cytometry](#)
- [Cell Culture](#)

**ApoA1 Antibody - Images**

Western blot analysis using recombinant human ApoA1. Lane 1: 250 ng; Lane 2: 50 ng; Lane 3: 10 ng

**ApoA1 Antibody - Background**

Apolipoprotein A-I (ApoA1) is the primary protein constituent of HDL, defining its size and shape, solubilizing its lipid components, removing cholesterol from peripheral cells, activating the LCAT enzyme, and delivering the resulting cholesterol esters to the liver.