

**IL-12p40 Antibody**  
**Rabbit Polyclonal Antibody**  
**Catalog # ABV11056****Specification**

---

**IL-12p40 Antibody - Product Information**

Application	WB
Primary Accession	<a href="#">P29460</a>
Other Accession	<a href="#">NP_002178</a>
Reactivity	Human
Host	Rabbit
Clonality	Polyclonal
Isotype	Rabbit IgG
Calculated MW	37169

**IL-12p40 Antibody - Additional Information****Gene ID** 3593**Application & Usage**

**Western blot analysis (0.5-4 µg/ml).** It detects mainly the 40 kDa of IL-12p40 isoform, and in a lesser extent the 35 kDa of IL-12p35 isoform. Recombinant human IL-12 can be used as a positive control. However, the optimal conditions should be determined individually.

**Target/Specificity**

IL-12

**Antibody Form**

Liquid

**Appearance**

Colorless liquid

**Formulation**

100 µg (0.5 mg/ml) affinity purified rabbit anti-human IL-12 polyclonal antibody in phosphate buffered saline (PBS), pH 7.2, containing 30% glycerol and 0.01% thimerosal.

**Handling**

The antibody solution should be gently mixed before use.

**Reconstitution & Storage**

-20 °C

**Background Descriptions****Precautions**

IL-12p40 Antibody is for research use only and not for use in diagnostic or therapeutic procedures.

## IL-12p40 Antibody - Protein Information

**Name** IL12B

**Synonyms** NKSF2

### Function

Cytokine that can act as a growth factor for activated T and NK cells, enhance the lytic activity of NK/lymphokine-activated killer cells, and stimulate the production of IFN-gamma by resting PBMC.

### Cellular Location

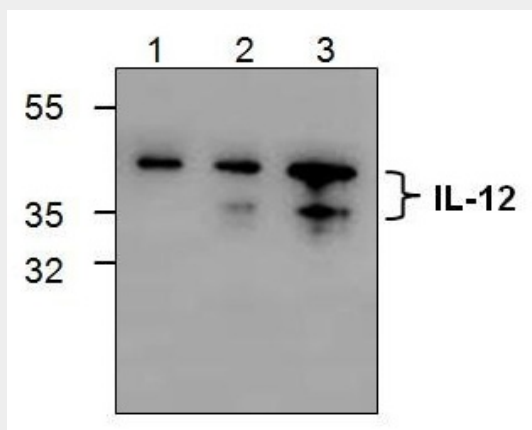
Secreted.

## IL-12p40 Antibody - Protocols

Provided below are standard protocols that you may find useful for product applications.

- [Western Blot](#)
- [Blocking Peptides](#)
- [Dot Blot](#)
- [Immunohistochemistry](#)
- [Immunofluorescence](#)
- [Immunoprecipitation](#)
- [Flow Cytometry](#)
- [Cell Culture](#)

## IL-12p40 Antibody - Images



Western blot analysis of IL-12 using recombinant human IL-12. Lane 1: 50 ng; Lane 2: 250 ng; Lane 3: 1  $\mu$ g

## IL-12p40 Antibody - Background

Interleukin-12 is a disulfide-linked heterodimeric protein (p70), composed of two subunits, p35 and p40, which are encoded by two different genes. Recombinant Human IL-12 p40 produced in E. Coli is a single, non-glycosylated polypeptide chain containing 306 amino acids fragment (23-328).