

GDF-3 Antibody
Rabbit Polyclonal Antibody
Catalog # ABV11061**Specification**

GDF-3 Antibody - Product Information

Application	WB
Primary Accession	O9NR23
Other Accession	AAM27000
Reactivity	Human
Host	Rabbit
Clonality	Polyclonal
Isotype	Rabbit IgG
Calculated MW	41387

GDF-3 Antibody - Additional Information**Gene ID** 9573**Application & Usage****Western blot analysis (0.5-4 µg/ml). Other applications have not been determined.****Other Names**

GDF3, GDF 3, GDF-3, Growth differentiation factor 3, VG-1-related protein 2, Vgr2, Vgr 2

Target/Specificity

GDF-3

Antibody Form

Liquid

Appearance

Colorless liquid

Formulation

100 µg (0.5 mg/ml) affinity purified rabbit anti-human GDF-3 polyclonal antibody in phosphate buffered saline (PBS), pH 7.2, containing 30% glycerol , 0.5 mg/ml BSA, and 0.01% thimerosal.

Handling

The antibody solution should be gently mixed before use.

Reconstitution & Storage

-20 °C

Background Descriptions**Precautions**

GDF-3 Antibody is for research use only and not for use in diagnostic or therapeutic procedures.

GDF-3 Antibody - Protein Information

Name GDF3

Function

Growth factor involved in early embryonic development and adipose-tissue homeostasis. During embryogenesis controls formation of anterior visceral endoderm and mesoderm and the establishment of anterior-posterior identity through a receptor complex comprising the receptor ACVR1B and the coreceptor CRIPTO (By similarity). Regulates adipose-tissue homeostasis and energy balance under nutrient overload in part by signaling through the receptor complex based on ACVR1C and CRIPTO/Cripto (PubMed:21805089).

Cellular Location

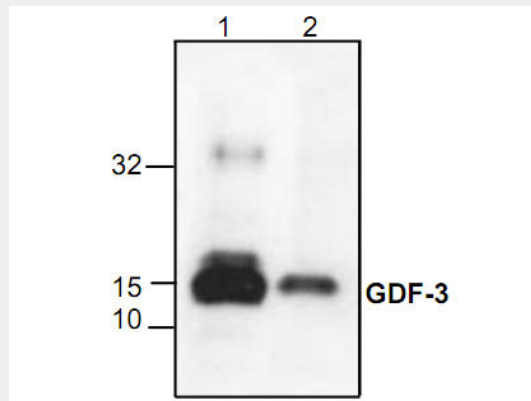
Secreted. Cytoplasm. Note=Mainly accumulated in the cytoplasm

GDF-3 Antibody - Protocols

Provided below are standard protocols that you may find useful for product applications.

- [Western Blot](#)
- [Blocking Peptides](#)
- [Dot Blot](#)
- [Immunohistochemistry](#)
- [Immunofluorescence](#)
- [Immunoprecipitation](#)
- [Flow Cytometry](#)
- [Cell Culture](#)

GDF-3 Antibody - Images



Western blot analysis using recombinant human GDF-3. Lane 1: 1 μ g; Lane 2: 250 ng

GDF-3 Antibody - Background

GDF-3 is a member of the TGF- β superfamily of growth and differentiation factors, and is highly homologous to GDF-9. Unlike most TGF- β family members, GDF-3 and GDF-9 are not disulfide-linked dimers. GDF-3 is expressed in adult bone marrow, spleen, thymus, and adipose tissue. The expression of GDF-3 is upregulated in high-fat-fed wild-type FABP4/aP2 null mice and was associated with obesity, but not with the related hyperglycemia/hyperinsulinemia which characterizes Type-2 diabetes. Anti-human GDF-3 polyclonal antibody contains 114 amino acids.