

MART-1/Melan-A Antibody
Rabbit Polyclonal Antibody
Catalog # ABV11071**Specification**

MART-1/Melan-A Antibody - Product Information

Application	WB
Primary Accession	Q16655
Reactivity	Human
Host	Rabbit
Clonality	Polyclonal
Isotype	Rabbit IgG
Calculated MW	13157

MART-1/Melan-A Antibody - Additional Information**Gene ID** 2315**Application & Usage**

Western blotting (0.5-4 µg/ml). However, the optimal concentrations should be determined individually. Recombinant human MART-1 can be used as a positive control.

Other Names

Melanoma antigen recognized by T-cells 1; MART-1; Protein Melan-A; Antigen SK29-AA; Antigen LB39-AA

Target/Specificity

MART-1/Melan-A

Antibody Form

Liquid

Appearance

Colorless liquid

Formulation

100 µg (0.5 mg/ml) affinity purified rabbit polyclonal antibody in phosphate-buffered saline (PBS) containing 30% glycerol, 0.5% BSA, and 0.01% thimerosal.

Handling

The antibody solution should be gently mixed before use.

Reconstitution & Storage

-20 °C

Background Descriptions**Precautions**

MART-1/Melan-A Antibody is for research use only and not for use in diagnostic or therapeutic procedures.

MART-1/Melan-A Antibody - Protein Information

Name MLANA

Synonyms MART1

Function

Involved in melanosome biogenesis by ensuring the stability of GPR143. Plays a vital role in the expression, stability, trafficking, and processing of melanocyte protein PMEL, which is critical to the formation of stage II melanosomes.

Cellular Location

Endoplasmic reticulum membrane; Single-pass type III membrane protein. Golgi apparatus. Golgi apparatus, trans-Golgi network membrane. Melanosome. Note=Also found in small vesicles and tubules dispersed over the entire cytoplasm. A small fraction of the protein is inserted into the membrane in an inverted orientation Inversion of membrane topology results in the relocalization of the protein from a predominant Golgi/post-Golgi area to the endoplasmic reticulum. Melanoma cells expressing the protein with an inverted membrane topology are more effectively recognized by specific cytolytic T-lymphocytes than those expressing the protein in its native membrane orientation

Tissue Location

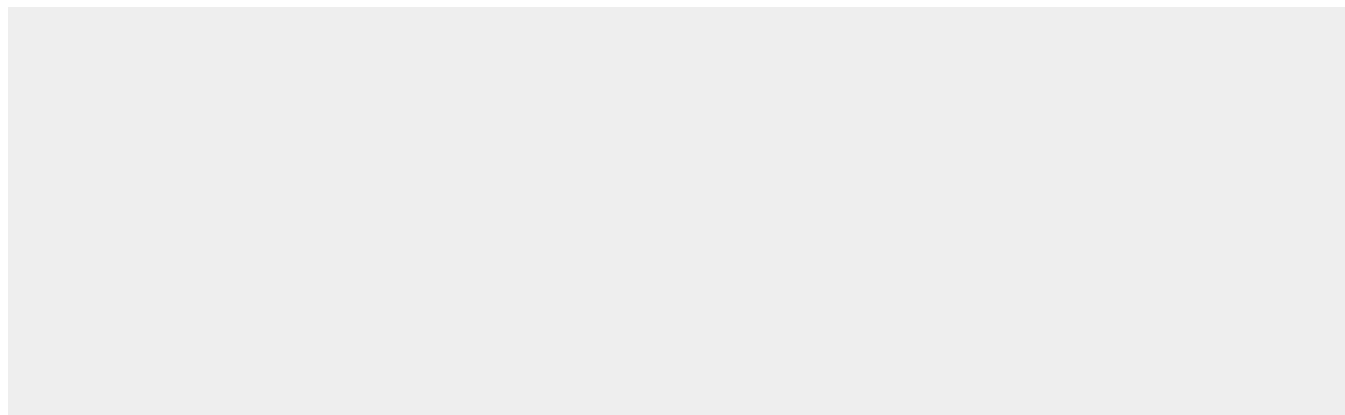
Expression is restricted to melanoma and melanocyte cell lines and retina

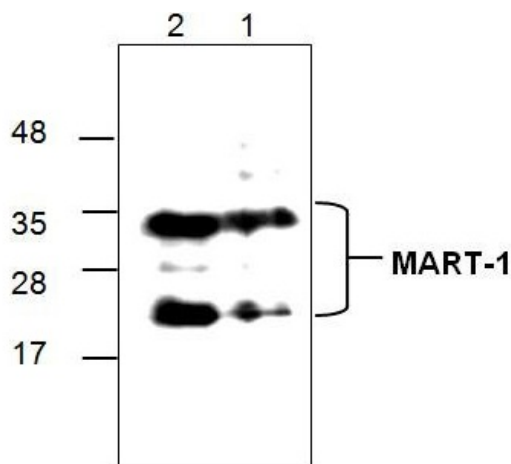
MART-1/Melan-A Antibody - Protocols

Provided below are standard protocols that you may find useful for product applications.

- [Western Blot](#)
- [Blocking Peptides](#)
- [Dot Blot](#)
- [Immunohistochemistry](#)
- [Immunofluorescence](#)
- [Immunoprecipitation](#)
- [Flow Cytometry](#)
- [Cell Culture](#)

MART-1/Melan-A Antibody - Images





Western blot analysis using recombinant human MART-1. Lane1: 10 ng; Lane 2: 50 ng

MART-1/Melan-A Antibody - Background

MART-1 (also known as Melan-A) is a melanocyte differentiation antigen recognized by autologous cytotoxic T lymphocytes. Six other melanoma associated antigens recognized by autologous cytotoxic T cells include MAGE-1, Tyrosinase, gp100, gp75, BAGE-1, and GAGE-1. Subcellular fractionation shows that MART-1 is present in melanosomes and endoplasmic reticulum.