

Adiponectin Antibody
Rabbit Polyclonal Antibody
Catalog # ABV11083**Specification**

Adiponectin Antibody - Product Information

Application	WB
Primary Accession	Q8K3R4
Other Accession	NM_144744
Reactivity	Human, Mouse, Rat
Host	Rabbit
Clonality	Polyclonal
Isotype	Rabbit IgG

Adiponectin Antibody - Additional Information

Application & Usage	Western blotting (0.5-2 µg/ml) and Immunoprecipitation (10-20 µg/ml). However, the optimal conditions should be determined individually. Recombinant human adiponectin or adiponectins in samples from human, mouse, and rat origins.
---------------------	---

Other Names

ACDC, ACRP30 , Acrp30, AdipoQ

Target/Specificity

Adiponectin

Antibody Form

Liquid

Appearance

Colorless liquid

Formulation

0.5 mg/ml affinity purified rabbit anti-adiponectin polyclonal antibody in phosphate buffered saline (PBS), pH 7.2, containing 30% glycerol, 0.5% BSA, 0.01% thimerosal.

Handling

The antibody solution should be gently mixed before use.

Reconstitution & Storage

-20 °C

Background Descriptions**Precautions**

Adiponectin Antibody is for research use only and not for use in diagnostic or therapeutic

procedures.

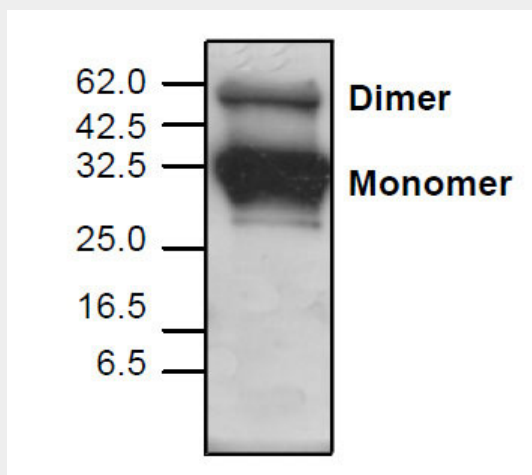
Adiponectin Antibody - Protein Information

Adiponectin Antibody - Protocols

Provided below are standard protocols that you may find useful for product applications.

- [Western Blot](#)
- [Blocking Peptides](#)
- [Dot Blot](#)
- [Immunohistochemistry](#)
- [Immunofluorescence](#)
- [Immunoprecipitation](#)
- [Flow Cytometry](#)
- [Cell Culture](#)

Adiponectin Antibody - Images



Western blot analysis using recombinant CFP. Lane 1: 10 ng; Lane 2: 50 ng; Lane 3: 250 ng; Lane 4: 1 ug

Adiponectin Antibody - Background

Adipocytes are highly active cells with potent autocrine, paracrine, and endocrine functions. Adiponectin is a serum protein produced and secreted exclusively by adipose tissues. Unlike insulin and leptin, adiponectin levels in plasma remain constant throughout the day and are not acutely affected by food intake.