

**CFP Antibody**  
**Rabbit Polyclonal Antibody**  
**Catalog # ABV11088****Specification**

---

**CFP Antibody - Product Information**

Application	WB
Other Accession	<a href="#">AAK02064</a>
Reactivity	All Species
Host	Rabbit
Clonality	Polyclonal
Isotype	Rabbit IgG

**CFP Antibody - Additional Information**

Application & Usage	Western blot analysis (0.5-4 µg/ml). However, the optimal conditions should be determined individually. Recombinant CFP can be used a positive control.
---------------------	--

**Target/Specificity**  
CFP

**Antibody Form**  
Liquid

**Appearance**  
Colorless liquid

**Formulation**  
100 µg (0.5 mg/ml) affinity purified rabbit anti-CFP polyclonal antibody in phosphate buffered saline (PBS), pH 7.2, containing 30% glycerol, 0.5% BSA, and 0.01% thimerosal.

**Handling**  
The antibody solution should be gently mixed before use.

**Reconstitution & Storage**  
-20 °C

**Background Descriptions**

**Precautions**  
CFP Antibody is for research use only and not for use in diagnostic or therapeutic procedures.

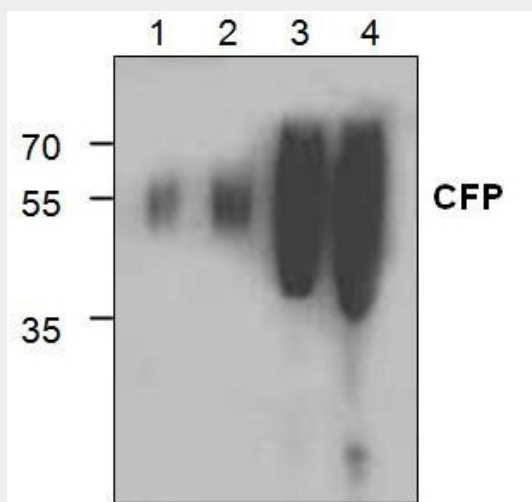
**CFP Antibody - Protein Information**

## CFP Antibody - Protocols

Provided below are standard protocols that you may find useful for product applications.

- [Western Blot](#)
- [Blocking Peptides](#)
- [Dot Blot](#)
- [Immunohistochemistry](#)
- [Immunofluorescence](#)
- [Immunoprecipitation](#)
- [Flow Cytometry](#)
- [Cell Culture](#)

## CFP Antibody - Images



Western blot analysis using recombinant CFP. Lane 1: 10 ng; Lane 2: 50 ng; Lane 3: 250 ng; Lane 4: 1 ug

## CFP Antibody - Background

The recombinant CFP (Cyan Fluorescent Protein) is expressed and purified from transformed E. coli using a method that ensures high purity and maximal CFP fluorescence. The protein is suitable as a control reagent for CFP expression studies or as a labeling reagent. Applications include: Use as standards for SDS-PAGE, Western blot analysis of CFP transfected cells, label other proteins, calibration of fluorometers and flow cytometers, fluorescence microscope, or microinjection of CFP into cells and tissues, etc.