

CETP Antibody
Rabbit Polyclonal Antibody
Catalog # ABV11187**Specification**

CETP Antibody - Product Information

Application	WB
Primary Accession	P11597
Reactivity	Human, Mouse, Rat, Rabbit
Host	Rabbit
Clonality	Polyclonal
Isotype	Rabbit IgG
Calculated MW	54756

CETP Antibody - Additional Information**Gene ID** 1071

Positive Control	Western Blot: Mouse 3T3 cell lysate
Application & Usage	Western Blot: 2-6 µg/ml
Other Names	
BPIFF, Cholesteryl ester transfer protein, HDLCQ10, Lipid transfer protein I	

Target/Specificity
CETP**Antibody Form**
Liquid**Appearance**
Colorless liquid**Formulation**
200 µg (0.5 mg/ml) polyclonal antibody in PBS pH 7.2, containing 30% glycerol, 0.5% BSA and 0.01% thimerosal.**Handling**
The antibody solution should be gently mixed before use.**Reconstitution & Storage**
-20 °C**Background Descriptions****Precautions**
CETP Antibody is for research use only and not for use in diagnostic or therapeutic procedures.**CETP Antibody - Protein Information**

Name CETP ([HGNC:1869](#))

Function

Involved in the transfer of neutral lipids, including cholesteryl ester and triglyceride, among lipoprotein particles. Allows the net movement of cholesteryl ester from high density lipoproteins/HDL to triglyceride-rich very low density lipoproteins/VLDL, and the equimolar transport of triglyceride from VLDL to HDL (PubMed:3600759, PubMed:24293641, PubMed:3281933). Regulates the reverse cholesterol transport, by which excess cholesterol is removed from peripheral tissues and returned to the liver for elimination (PubMed:17237796).

Cellular Location

Secreted. Note=Secreted in plasma

Tissue Location

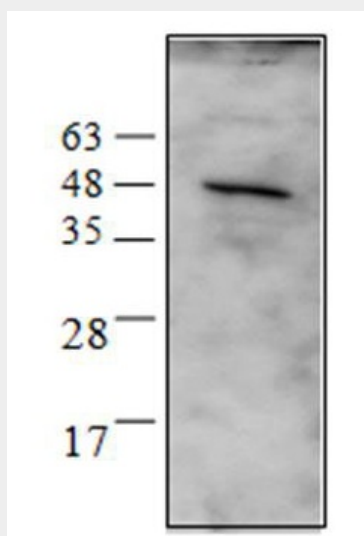
Expressed by the liver and secreted in plasma.

CETP Antibody - Protocols

Provided below are standard protocols that you may find useful for product applications.

- [Western Blot](#)
- [Blocking Peptides](#)
- [Dot Blot](#)
- [Immunohistochemistry](#)
- [Immunofluorescence](#)
- [Immunoprecipitation](#)
- [Flow Cytometry](#)
- [Cell Culture](#)

CETP Antibody - Images



Western blot analysis of CETP using Mouse 3T3 cell lysate.

CETP Antibody - Background

It has been proposed that high density lipoproteins (HDLs) function along with Lecithin, cholesterol acyltransferase and CETP to facilitate cholesterol transport from tissues to the liver. CETP is responsible for neutral lipid transfer activity in plasma in numerous species. Since CETP is able to accelerate specifically the exchange of lipid components between pro and anti-atherogenic lipoprotein fractions, it may be a key determinant of the global atherogenicity of the plasma lipoprotein profile and arises as a possible target in atherosclerosis prevention. CETP has an important role in reverse cholesterol transport and shaping and affecting the composition of plasma lipoproteins. In general elevated levels of CETP have been associated with increased risk of coronary heart disease.