

**SPHKAP Antibody**  
**Rabbit Polyclonal Antibody**  
**Catalog # ABV11208****Specification**

---

**SPHKAP Antibody - Product Information**

Application	WB
Primary Accession	<a href="#">Q2M3C7</a>
Reactivity	Human, Mouse, Rat
Host	Rabbit
Clonality	Polyclonal
Isotype	Rabbit IgG
Calculated MW	186456

**SPHKAP Antibody - Additional Information****Gene ID** 80309Positive Control  
Application & Usage**Western blot: Jurkat Cell lysate**  
**Western blot: 1-4 µg/ml.****Other Names**

A-kinase anchor protein SPHKAP, SPHK1 interactor, AKAP domain containing, DKFZp781H143, DKFZp781J171, KIAA1678, MGC132614 antibody, MGC132616, SKIP antibody, A-kinase anchor protein Sphingosine kinase type 1-interacting protein, SPHK1 (Sphingosine kinase type 1) interacting protein, SPHK1-interactor and AKAP domain-containing protein, SPHK1 interactor, AKAP domain.

**Target/Specificity**

SPHKAP

**Antibody Form**

Liquid

**Appearance**

Colorless liquid

**Formulation**

100 µg or 30 µg (0.5 mg/ml) of antibody in PBS pH 7.2 containing 0.01 % BSA, 0.01 % thimerosal, and 50 % glycerol.

**Handling**

The antibody solution should be gently mixed before use.

**Reconstitution & Storage**

-20 °C

**Background Descriptions****Precautions**

SPHKAP Antibody is for research use only and not for use in diagnostic or therapeutic procedures.

## SPHKAP Antibody - Protein Information

**Name** SPHKAP

**Synonyms** KIAA1678, SKIP

### Function

Anchoring protein that binds preferentially to the type I regulatory subunit of c-AMP-dependent protein kinase (PKA type I) and targets it to distinct subcellular compartments. May act as a converging factor linking cAMP and sphingosine signaling pathways. Plays a regulatory role in the modulation of SPHK1.

### Cellular Location

Cytoplasm. Note=Colocalizes with SPHK1 in the cytoplasm

### Tissue Location

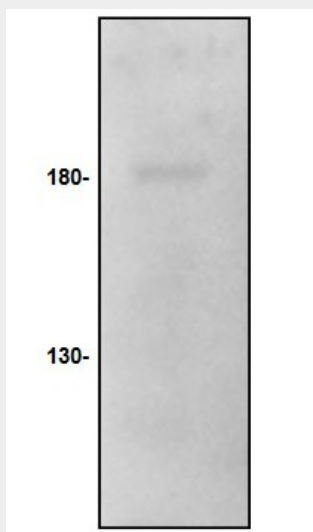
Highly expressed in heart. Both isoforms abundantly expressed in ventricle. Also expressed in spleen, ovary and brain

## SPHKAP Antibody - Protocols

Provided below are standard protocols that you may find useful for product applications.

- [Western Blot](#)
- [Blocking Peptides](#)
- [Dot Blot](#)
- [Immunohistochemistry](#)
- [Immunofluorescence](#)
- [Immunoprecipitation](#)
- [Flow Cytometry](#)
- [Cell Culture](#)

## SPHKAP Antibody - Images



Western blot of SPHKAP antibody with Jurkat cell lysate.

**SPHKAP Antibody - Background**

Anchoring protein that binds preferentially to the type I regulatory subunit of c-AMP-dependent protein kinase (PKA type I) and targets it to distinct subcellular compartments. May act as a converging factor linking cAMP and sphingosine signaling pathways. Plays a regulatory role in the modulation of SPHK1.