

Nucleostemin/GLN3 Antibody (CT)
Rabbit Polyclonal Antibody
Catalog # ABV11324**Specification**

Nucleostemin/GLN3 Antibody (CT) - Product Information

Application	WB, IHC
Primary Accession	Q9BVP2
Host	Rabbit
Clonality	Polyclonal
Isotype	Rabbit IgG
Calculated MW	61993

Nucleostemin/GLN3 Antibody (CT) - Additional Information**Gene ID** 26354

Positive Control	Western blot: HL60 cell line lysate, IHC: human hepatocarcinoma tissue.
Application & Usage	WB: 1:1000, IHC: 1:10 - 1:50.

Other Names

GNL3; E2IG3; NS; Guanine nucleotide-binding protein-like 3; E2-induced gene 3 protein; Novel nucleolar protein 47; Nucleolar GTP-binding protein 3; Nucleostemin

Target/Specificity

Nucleostemin

Antibody Form

Liquid

Appearance

Colorless liquid

Formulation

This antibody is prepared by Saturated Ammonium Sulfate (SAS) precipitation followed by dialysis against PBS.

Handling

The antibody solution should be gently mixed before use.

Reconstitution & Storage

-20 °C

Background Descriptions**Precautions**

Nucleostemin/GLN3 Antibody (CT) is for research use only and not for use in diagnostic or therapeutic procedures.

Nucleostemin/GLN3 Antibody (CT) - Protein Information

Name GNL3

Synonyms E2IG3, NS

Function

May be required to maintain the proliferative capacity of stem cells. Stabilizes MDM2 by preventing its ubiquitination, and hence proteasomal degradation (By similarity).

Cellular Location

Nucleus {ECO:0000250|UniProtKB:Q811S9}. Nucleus, nucleolus. Note=Shuttles between the nucleus and nucleolus. {ECO:0000250|UniProtKB:Q811S9}

Tissue Location

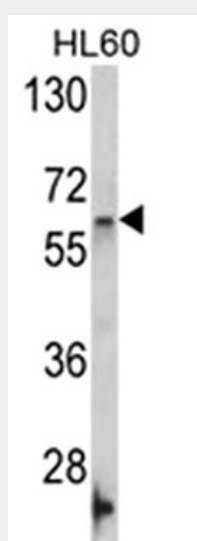
Increased levels in lung tissue in cancer patients.

Nucleostemin/GLN3 Antibody (CT) - Protocols

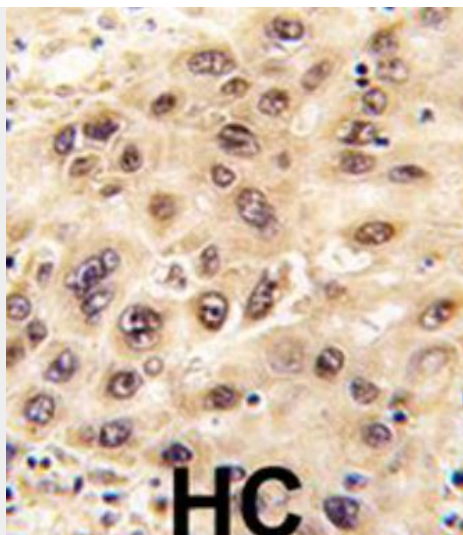
Provided below are standard protocols that you may find useful for product applications.

- [Western Blot](#)
- [Blocking Peptides](#)
- [Dot Blot](#)
- [Immunohistochemistry](#)
- [Immunofluorescence](#)
- [Immunoprecipitation](#)
- [Flow Cytometry](#)
- [Cell Culture](#)

Nucleostemin/GLN3 Antibody (CT) - Images



Western blot analysis of GNL3 Antibody in HL60 cell line lysates (35 µg/lane). GNL3 (arrow) was detected using the purified pAb.



Formalin-fixed and paraffin-embedded human hepatocarcinoma tissue reacted with GNL3 antibody, which was peroxidase-conjugated to the secondary antibody, followed by DAB staining.

Nucleostemin/GLN3 Antibody (CT) - Background

Nucleostemin, also designated Nucleolar GTP-binding protein 3, is a member of the MMR1/HSR1 GTP-binding protein family. It is expressed in the nucleoli of adult CNS stem cells, primitive bone marrow cells, and embryonic stem cells and in several cancer cell lines. Nucleostemin is often used as a stem cell marker. Overexpression or depletion of the protein can reduce cell proliferation in CNS stem cells. Nucleostemin shuttles between the nucleus and the nucleolus and may be important in maintaining the proliferative capacity of stem cells. Nucleostemin is important in the growth regulation of liver cancer, gastric cancer and several other cancer types. The gene encoding Nucleostemin is localized to chromosome 3p21.1.