

JMJD2b polyclonal antibody
Rabbit Polyclonal Antibody
Catalog # ABV11386**Specification**

JMJD2b polyclonal antibody - Product Information

Application	E, WB
Primary Accession	O94953
Host	Rabbit
Clonality	Polyclonal
Isotype	Rabbit IgG
Calculated MW	121897

JMJD2b polyclonal antibody - Additional Information**Gene ID** 23030

Positive Control

**Western blot: HeLa cells, ELISA: Peptides,
IF: HeLa cells.**

Application & Usage

**Western Blot: 1:1000, ELISA: 1:200, IF:
1:200.****Other Names**

JHDM3b, KDM4b

Target/Specificity

JMJD2b

Antibody Form

Liquid

Appearance

Colorless liquid

Formulation

In PBS with 0.05% (W/V) sodium azide.

Handling

The antibody solution should be gently mixed before use.

Reconstitution & Storage

-20 °C

Background Descriptions**Precautions**

JMJD2b polyclonal antibody is for research use only and not for use in diagnostic or therapeutic procedures.

JMJD2b polyclonal antibody - Protein Information

Name KDM4B

Synonyms JHDM3B, JMJD2B, KIAA0876

Function

Histone demethylase that specifically demethylates 'Lys-9' of histone H3, thereby playing a role in histone code. Does not demethylate histone H3 'Lys-4', H3 'Lys-27', H3 'Lys-36' nor H4 'Lys- 20'. Only able to demethylate trimethylated H3 'Lys-9', with a weaker activity than KDM4A, KDM4C and KDM4D. Demethylation of Lys residue generates formaldehyde and succinate (PubMed:16603238, PubMed:28262558). Plays a critical role in the development of the central nervous system (CNS).

Cellular Location

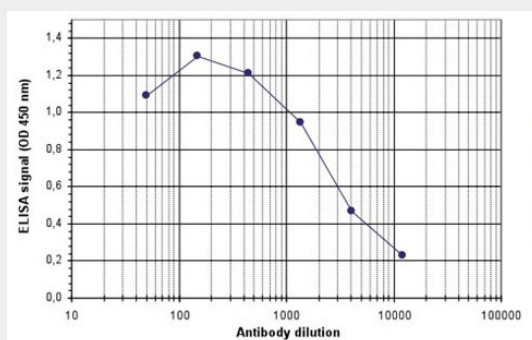
Nucleus {ECO:0000255|PROSITE-ProRule:PRU00537, ECO:0000269|PubMed:15927959}

JMJD2b polyclonal antibody - Protocols

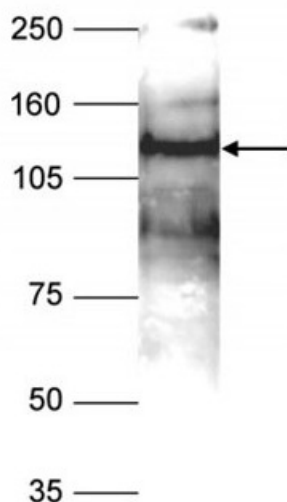
Provided below are standard protocols that you may find useful for product applications.

- [Western Blot](#)
- [Blocking Peptides](#)
- [Dot Blot](#)
- [Immunohistochemistry](#)
- [Immunofluorescence](#)
- [Immunoprecipitation](#)
- [Flow Cytometry](#)
- [Cell Culture](#)

JMJD2b polyclonal antibody - Images



To determine the titer, an ELISA was performed using a serial dilution of the antibody. The wells were coated with the peptide used for immunization of the rabbit. By plotting the absorbance against the antibody dilution, the titer of the antibody was estimated to be 1:3,000.



Nuclear extracts of HeLa cells were analyzed with the antibody diluted 1:1,000 in TBS-Tween containing 5% skimmed milk (Figure 2). The molecular weight marker (in kDa) is shown on the left; the location of the protein of interest is indicated on the right.

JMJD2b polyclonal antibody - Background

JMJD2b belongs to the JMJD2 family of histone demethylases which play an important role in the establishment of the histone code. JMJD2b specifically demethylates the trimethylated K9 of histone H3. It is not able to demethylate K4, K27 and K36 of histone H3, nor K20 of histone H4.