

**PHC2 polyclonal antibody**  
**Rabbit Polyclonal Antibody**  
**Catalog # ABV11392****Specification**

---

**PHC2 polyclonal antibody - Product Information**

Application	E
Primary Accession	<a href="#">Q8IXK0</a>
Host	Rabbit
Clonality	Polyclonal
Isotype	Rabbit IgG
Calculated MW	90713

**PHC2 polyclonal antibody - Additional Information****Gene ID** 1912

Positive Control	<b>ELISA: Peptides.</b>
Application & Usage	<b>ELISA: 1:500.</b>
<b>Other Names</b>	
EDR2, HPH2, PH2	

**Target/Specificity**  
PHC2**Antibody Form**  
Liquid**Appearance**  
Colorless liquid**Formulation**  
In PBS with 0.05% (W/V) sodium azide.**Handling**  
The antibody solution should be gently mixed before use.**Reconstitution & Storage**  
-20 °C**Background Descriptions****Precautions**  
PHC2 polyclonal antibody is for research use only and not for use in diagnostic or therapeutic procedures.**PHC2 polyclonal antibody - Protein Information**

**Name** PHC2

**Synonyms** EDR2, PH2

**Function**

Component of a Polycomb group (PcG) multiprotein PRC1-like complex, a complex class required to maintain the transcriptionally repressive state of many genes, including Hox genes, throughout development. PcG PRC1 complex acts via chromatin remodeling and modification of histones; it mediates monoubiquitination of histone H2A 'Lys-119', rendering chromatin heritably changed in its expressibility.

**Cellular Location**

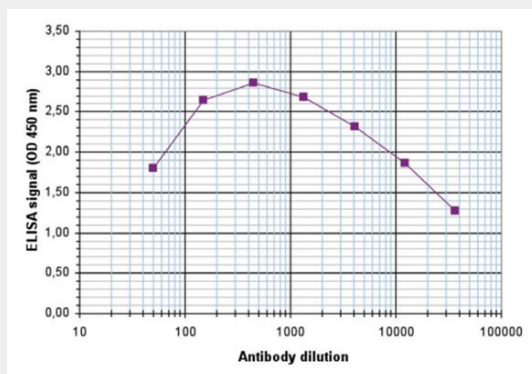
Nucleus.

**PHC2 polyclonal antibody - Protocols**

Provided below are standard protocols that you may find useful for product applications.

- [Western Blot](#)
- [Blocking Peptides](#)
- [Dot Blot](#)
- [Immunohistochemistry](#)
- [Immunofluorescence](#)
- [Immunoprecipitation](#)
- [Flow Cytometry](#)
- [Cell Culture](#)

**PHC2 polyclonal antibody - Images**



To determine the titer, an ELISA was performed using a serial dilution of the antibody. The wells were coated with the peptide used for immunization of the rabbit. By plotting the absorbance against the antibody dilution, the titer of the antibody was estimated to be 1:33300.

**PHC2 polyclonal antibody - Background**

PHC2 is a component of a Polycomb group (PcG) multiprotein PRC1-like complex, a complex class required to maintain the transcriptionally repressive state of many genes, including Hox genes, throughout development. The PcG PRC1 complex acts via chromatin remodeling and modification of histones; it mediates monoubiquitination of lysine 119 on histone H2A, rendering chromatin heritably changed in its expressibility.