

**Cyclin G1 Antibody**  
**Rabbit Polyclonal Antibody**  
**Catalog # ABV11445****Specification**

---

**Cyclin G1 Antibody - Product Information**

Application	IHC, WB
Primary Accession	<a href="#">P51959</a>
Reactivity	Human, Mouse, Rat, Pig, Bovine
Host	Rabbit
Clonality	Polyclonal
Isotype	Rabbit IgG
Calculated MW	34074

**Cyclin G1 Antibody - Additional Information****Gene ID 900**

Positive Control	WB: Jurkat cells, mouse liver, rat liver, whole cell lysates, IHC: human lung cancer
Application & Usage	WB: 1:500 - 1:1000, IHC: 1:100 - 1:200
<b>Other Names</b>	
CCNG; CYCG1; Cyclin-G1; Cyclin-G	

**Target/Specificity**  
Cyclin G1**Antibody Form**  
Liquid**Appearance**  
Colorless liquid**Formulation**  
1 mg/ml in 0.42% Potassium phosphate, 0.87% Sodium chloride, pH 7.3, 30% glycerol, and 0.01% sodium azide.**Handling**  
The antibody solution should be gently mixed before use.**Reconstitution & Storage**  
-20 °C**Background Descriptions****Precautions**  
Cyclin G1 Antibody is for research use only and not for use in diagnostic or therapeutic procedures.

## Cyclin G1 Antibody - Protein Information

**Name** CCNG1

**Synonyms** CCNG, CYCG1

### Function

May play a role in growth regulation. Is associated with G2/M phase arrest in response to DNA damage. May be an intermediate by which p53 mediates its role as an inhibitor of cellular proliferation (By similarity).

### Cellular Location

Nucleus. Note=DNA replication foci after DNA damage

### Tissue Location

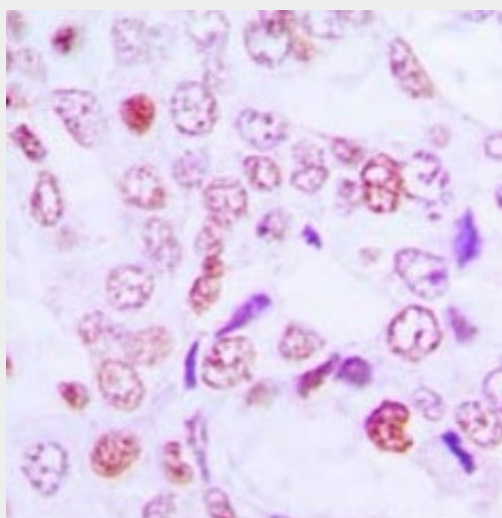
High levels in skeletal muscle, ovary, kidney and colon

## Cyclin G1 Antibody - Protocols

Provided below are standard protocols that you may find useful for product applications.

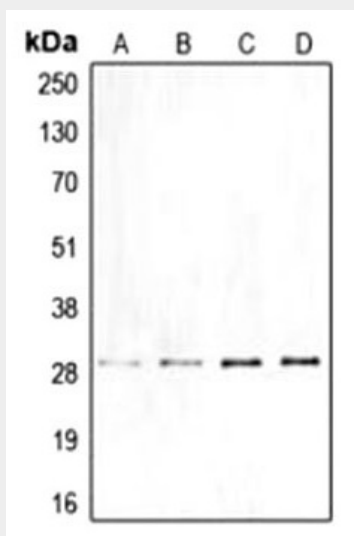
- [Western Blot](#)
- [Blocking Peptides](#)
- [Dot Blot](#)
- [Immunohistochemistry](#)
- [Immunofluorescence](#)
- [Immunoprecipitation](#)
- [Flow Cytometry](#)
- [Cell Culture](#)

## Cyclin G1 Antibody - Images



Immunohistochemical analysis of Cyclin G1 staining in human lung cancer formalin fixed paraffin embedded tissue section. The section was pre-treated using heat mediated antigen retrieval with sodium citrate buffer (pH 6.0). The section was then incubated with the antibody at room

temperature and detected using an HRP conjugated compact polymer system. DAB was used as the chromogen. The section was then counterstained with haematoxylin and mounted with DPX.



Western blot analysis of Cyclin G1 expression in DLD (A), Jurkat (B), mouse liver (C), rat liver (D) whole cell lysates

#### **Cyclin G1 Antibody - Background**

Cyclin-G1 (CCNG1) belongs to the cyclin family and contains the cyclin box. CCNG1 may have a part in growth regulation and is associated with G2/M phase arrest in response to DNA damage. CCNG1 may be an intermediate by which p53 mediates its role as an inhibitor of cellular proliferation. The CCNG1 protein lacks the protein destabilizing (PEST) sequence which is present in other family members.