

P-glycoprotein Antibody
Rabbit Polyclonal Antibody
Catalog # ABV11487**Specification**

P-glycoprotein Antibody - Product Information

Application	IHC
Primary Accession	P08183
Reactivity	Human, Mouse, Rat
Host	Rabbit
Clonality	Polyclonal
Isotype	Rabbit Ig
Calculated MW	141479

P-glycoprotein Antibody - Additional Information**Gene ID** 5243

Positive Control	IHC: Mouse Kidney, Mouse Intestine, Rat Kidney, Human Lung Cancer tissue
Application & Usage	IHC: 1:500-1:1000 of 0.5 mg/ml stock
Other Names	
P-gp, Multidrug resistance protein 1, MDR1, ATP-binding cassette sub-family B (MDR/TAP) member 1, ABCB1	

Target/Specificity
P-glycoprotein**Antibody Form**
Lyophilized**Appearance**
Solid**Formulation**
Each vial contains 5mg BSA, 0.9 mg NaCl, 0.2 mg Na₂HPO₄, 0.05 mg Na₃**Handling**
The vial should be centrifuged to collect the lyophilized solid before reconstituting**Reconstitution & Storage**
-20 °C**Background Descriptions****Precautions**
P-glycoprotein Antibody is for research use only and not for use in diagnostic or therapeutic procedures.

P-glycoprotein Antibody - Protein Information

Name ABCB1 ([HGNC:40](#))

Synonyms MDR1, PGY1

Function

Translocates drugs and phospholipids across the membrane (PubMed:8898203, PubMed:2897240, PubMed:9038218, PubMed:35970996). Catalyzes the flop of phospholipids from the cytoplasmic to the exoplasmic leaflet of the apical membrane. Participates mainly to the flop of phosphatidylcholine, phosphatidylethanolamine, beta-D-glucosylceramides and sphingomyelins (PubMed:8898203). Energy-dependent efflux pump responsible for decreased drug accumulation in multidrug-resistant cells (PubMed:2897240, PubMed:9038218, PubMed:35970996).

Cellular Location

Cell membrane; Multi-pass membrane protein {ECO:0000255|PROSITE-ProRule:PRU00441} Apical cell membrane. Cytoplasm Note=ABCB1 localization is influenced by C1orf115 expression levels (plasma membrane versus cytoplasm). Localized to the apical membrane of enterocytes (PubMed:28408210).

Tissue Location

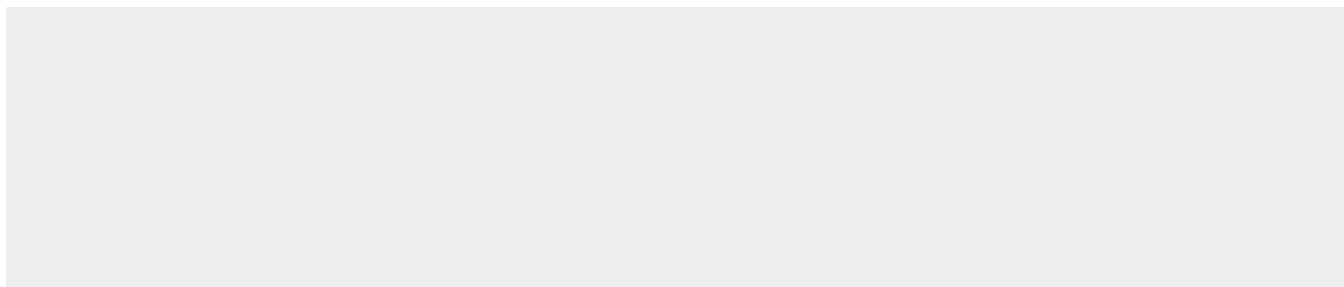
Expressed in small intestine (PubMed:28408210). Expressed in liver, kidney and brain.

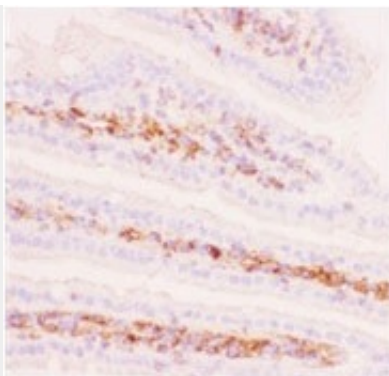
P-glycoprotein Antibody - Protocols

Provided below are standard protocols that you may find useful for product applications.

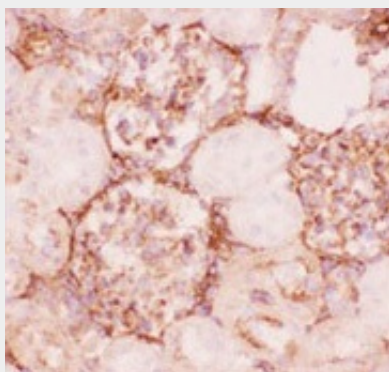
- [Western Blot](#)
- [Blocking Peptides](#)
- [Dot Blot](#)
- [Immunohistochemistry](#)
- [Immunofluorescence](#)
- [Immunoprecipitation](#)
- [Flow Cytometry](#)
- [Cell Culture](#)

P-glycoprotein Antibody - Images

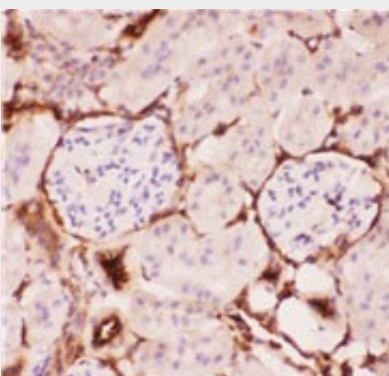




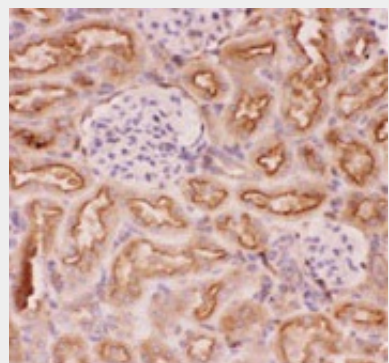
IHC(F):Mouse Intestine



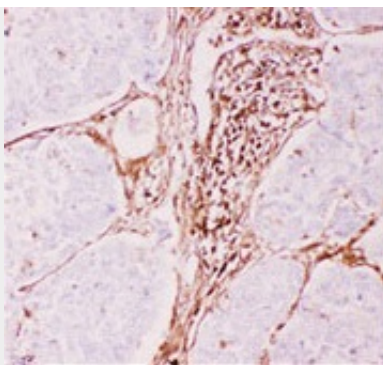
IHC(F):Rat Kidney



IHC(P):Mouse Kidney



IHC(P):Rat Kidney



IHC(P):Human lung cancer

P-glycoprotein Antibody - Background

P-gp, also called MDR1 or ABCB1, is a glycoprotein that in humans is encoded by the ABCB1 gene. P-gp is a well-characterized ABC-transporter (which transports a wide variety of xenobiotics across extra- and intracellular membranes). It is an ATP-dependent drug efflux pump with broad substrate specificity. It is responsible for decreased drug accumulation in multidrug-resistant cells and often mediates the development of resistance to anticancer drugs. This protein functions in the kidneys, liver, blood-brain barrier and the intestinal epithelium.