

TACE Antibody
Purified Rabbit Polyclonal Antibody
Catalog # ABV11516**Specification**

TACE Antibody - Product Information

Application	WB
Primary Accession	P78536
Reactivity	Human, Rat
Host	Rabbit
Clonality	Polyclonal
Isotype	Rabbit IgG
Calculated MW	93021

TACE Antibody - Additional Information**Gene ID** 6868**Other Names**

TNF-alpha converting enzyme, ADAM17

Target/Specificity

TACE/ADAM17

Formulation

100 µg (0.5 mg/ml) of antibody in PBS, 0.01 % BSA, 0.01 % thimerosal, and 50 % glycerol, pH 7.2

Handling

The antibody solution should be gently mixed before use.

Background Descriptions**Precautions**

TACE Antibody is for research use only and not for use in diagnostic or therapeutic procedures.

TACE Antibody - Protein Information**Name** ADAM17 ([HGNC:195](#))**Synonyms** CSVP, TACE**Function**

Transmembrane metalloprotease which mediates the ectodomain shedding of a myriad of transmembrane proteins including adhesion proteins, growth factor precursors and cytokines important for inflammation and immunity (PubMed:24226769, PubMed:24227843, PubMed:24227843, PubMed:24227843).

href="http://www.uniprot.org/citations/28060820" target="_blank">28060820, PubMed:28923481). Cleaves the membrane-bound precursor of TNF-alpha to its mature soluble form (PubMed:36078095, PubMed:9034191). Responsible for the proteolytical release of soluble JAM3 from endothelial cells surface (PubMed:20592283). Responsible for the proteolytic release of several other cell-surface proteins, including p75 TNF-receptor, interleukin 1 receptor type II, p55 TNF- receptor, transforming growth factor-alpha, L-selectin, growth hormone receptor, MUC1 and the amyloid precursor protein (PubMed:12441351). Acts as an activator of Notch pathway by mediating cleavage of Notch, generating the membrane-associated intermediate fragment called Notch extracellular truncation (NEXT) (PubMed:24226769). Plays a role in the proteolytic processing of ACE2 (PubMed:24227843). Plays a role in hemostasis through shedding of GP1BA, the platelet glycoprotein Ib alpha chain (By similarity). Mediates the proteolytic cleavage of LAG3, leading to release the secreted form of LAG3 (By similarity). Mediates the proteolytic cleavage of IL6R, leading to the release of secreted form of IL6R (PubMed:26876177, PubMed:28060820). Mediates the proteolytic cleavage and shedding of FCGR3A upon NK cell stimulation, a mechanism that allows for increased NK cell motility and detachment from opsonized target cells. Cleaves TREM2, resulting in shedding of the TREM2 ectodomain (PubMed:28923481).

Cellular Location

Cell membrane; Single-pass type I membrane protein

Tissue Location

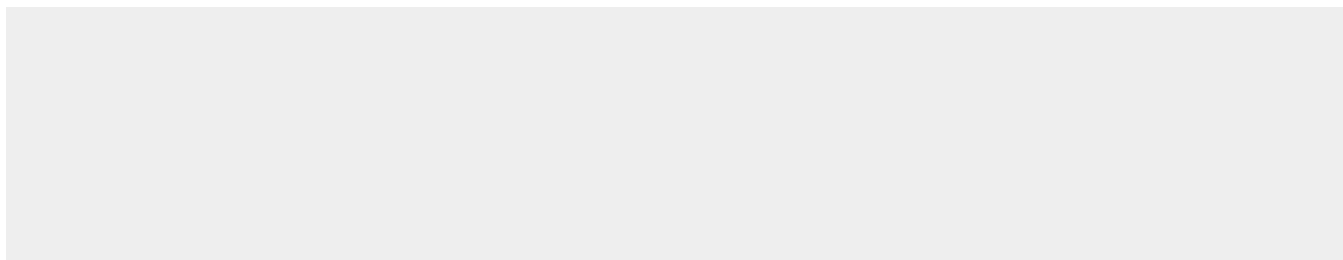
Ubiquitously expressed. Expressed at highest levels in adult heart, placenta, skeletal muscle, pancreas, spleen, thymus, prostate, testes, ovary and small intestine, and in fetal brain, lung, liver and kidney. Expressed in natural killer cells (at protein level) (PubMed:24337742).

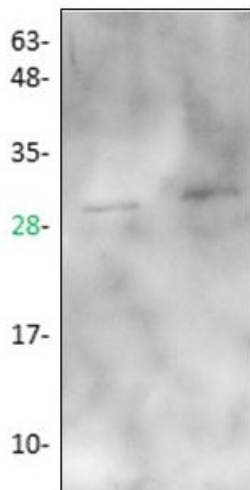
TACE Antibody - Protocols

Provided below are standard protocols that you may find useful for product applications.

- [Western Blot](#)
- [Blocking Peptides](#)
- [Dot Blot](#)
- [Immunohistochemistry](#)
- [Immunofluorescence](#)
- [Immunoprecipitation](#)
- [Flow Cytometry](#)
- [Cell Culture](#)

TACE Antibody - Images





Western blot of recombinant protein with TACE antibody: Lane1: 90ng, Lane2: 180ng.

TACE Antibody - Background

TACE (TNF-alpha converting enzyme, ADAM17) is a membrane-bound Metalloprotease from the ADAM (a disintegrin and Metalloprotease) family of proteins. It cleaves 26kDa type II membrane-bound precursor of TNF-a into 17 kDa mature form which is secreted. TACE is also known to process other membrane proteins including TNF receptor, TGF-alpha and amyloid protein precursor. Recombinant active untagged TACE amino acid sequence is from Arg 215 to Asn 651