

HtrA2/Omi Antibody
Purified Rabbit Polyclonal Antibody
Catalog # ABV11535**Specification**

HtrA2/Omi Antibody - Product Information

Application	WB
Primary Accession	O43464
Other Accession	BAF84666
Reactivity	Human, Mouse, Rat
Host	Rabbit
Clonality	Polyclonal
Isotype	Rabbit IgG
Calculated MW	48841

HtrA2/Omi Antibody - Additional Information**Gene ID** 27429**Other Names**

HTRA2 , HtrA2 , PARK13 , OMI , PRSS25

Target/Specificity

HtrA2/Omi

Formulation

100 µg (0.5 mg/ml) affinity purified rabbit polyclonal antibody in phosphate buffered saline (PBS), pH 7.2, containing 30% glycerol, 0.5% BSA, 0.01% thimerosal.

Handling

The antibody solution should be gently mixed before use.

Background Descriptions**Precautions**

HtrA2/Omi Antibody is for research use only and not for use in diagnostic or therapeutic procedures.

HtrA2/Omi Antibody - Protein Information**Name** HTRA2**Synonyms** OMI, PRSS25**Function**

Serine protease that shows proteolytic activity against a non-specific substrate beta-casein. Promotes or induces cell death either by direct binding to and inhibition of BIRC proteins (also

called inhibitor of apoptosis proteins, IAPs), leading to an increase in caspase activity, or by a BIRC inhibition-independent, caspase- independent and serine protease activity-dependent mechanism. Cleaves THAP5 and promotes its degradation during apoptosis. Isoform 2 seems to be proteolytically inactive.

Cellular Location

Mitochondrion intermembrane space. Mitochondrion membrane; Single-pass membrane protein
Note=Predominantly present in the intermembrane space. Released into the cytosol following apoptotic stimuli, such as UV treatment, and stimulation of mitochondria with caspase-8 truncated BID/tBID

Tissue Location

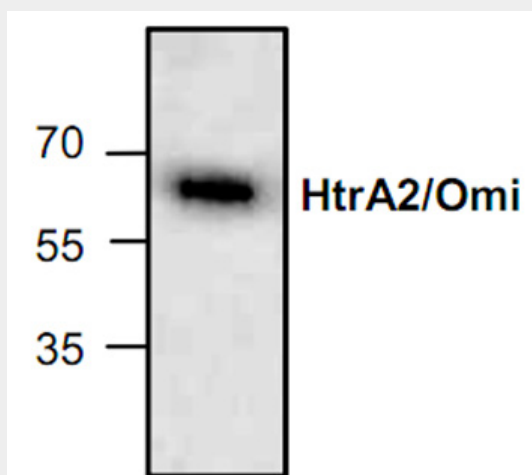
[Isoform 1]: Ubiquitously expressed.

HtrA2/Omi Antibody - Protocols

Provided below are standard protocols that you may find useful for product applications.

- [Western Blot](#)
- [Blocking Peptides](#)
- [Dot Blot](#)
- [Immunohistochemistry](#)
- [Immunofluorescence](#)
- [Immunoprecipitation](#)
- [Flow Cytometry](#)
- [Cell Culture](#)

HtrA2/Omi Antibody - Images



HtrA2/Omi Antibody - Background

Human HtrA2 (also designated Omi) is a novel member of the HtrA serine protease family and is highly homologous to HtrA (also known as L56 and HtrA1). HtrA2 is ubiquitously expressed nuclear protease that is capable of autoproteolysis. The HtrA2 protein exists as two polypeptides of 38 and 40 kDa and as an alternatively spliced form called D-Omi, which is predominately expressed in the kidney, colon and thyroid. Like HtrA, HtrA2 is involved in the degradation aberrantly folded proteins during conditions of cellular stress, suggesting that it may possess a chaperone-like role under

normal conditions.