

**RbBP5 Antibody**  
**Purified Rabbit Polyclonal Antibody**  
**Catalog # ABV11560****Specification**

---

**RbBP5 Antibody - Product Information**

Application	WB
Primary Accession	<a href="#">Q8BX09</a>
Other Accession	<a href="#">NP_766105</a>
Reactivity	Human, Mouse, Rat
Host	Rabbit
Clonality	Polyclonal
Isotype	Rabbit IgG
Calculated MW	59098

**RbBP5 Antibody - Additional Information****Gene ID** 213464**Other Names**

RbBP5, Retinoblastoma binding protein 5; RBQ3, Retinoblastoma binding protein RBQ3

**Target/Specificity**

RbBP5

**Formulation**

100 µg (0.5 mg/ml) affinity purified rabbit polyclonal antibody in phosphate-buffered saline (PBS) containing 30% glycerol, 0.5% BSA and 0.01% thimerosal.

**Handling**

The antibody solution should be gently mixed before use.

**Background Descriptions****Precautions**

RbBP5 Antibody is for research use only and not for use in diagnostic or therapeutic procedures.

**RbBP5 Antibody - Protein Information****Name** Rbbp5**Function**

In embryonic stem (ES) cells, plays a crucial role in the differentiation potential, particularly along the neural lineage, regulating gene induction and H3 'Lys-4' methylation at key developmental loci, including that mediated by retinoic acid (PubMed:<a href="http://www.uniprot.org/citations/21335234" target="\_blank">21335234</a>). Does not affect ES cell self-renewal (PubMed:<a href="http://www.uniprot.org/citations/21335234"

target="\_blank">21335234</a>). Component or associated component of some histone methyltransferase complexes which regulates transcription through recruitment of those complexes to gene promoters (By similarity). As part of the MLL1/MLL complex, involved in mono-, di- and trimethylation at 'Lys-4' of histone H3 (By similarity). Histone H3 'Lys-4' methylation represents a specific tag for epigenetic transcriptional activation (By similarity). In association with ASH2L and WDR5, stimulates the histone methyltransferase activities of KMT2A, KMT2B, KMT2C, KMT2D, SETD1A and SETD1B (By similarity).

#### **Cellular Location**

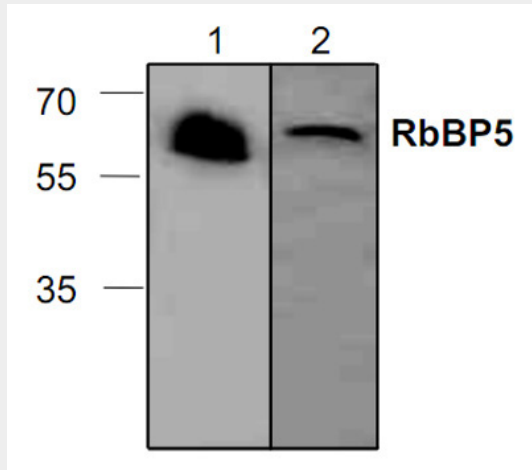
Nucleus.

#### **RbBP5 Antibody - Protocols**

Provided below are standard protocols that you may find useful for product applications.

- [Western Blot](#)
- [Blocking Peptides](#)
- [Dot Blot](#)
- [Immunohistochemistry](#)
- [Immunofluorescence](#)
- [Immunoprecipitation](#)
- [Flow Cytometry](#)
- [Cell Culture](#)

#### **RbBP5 Antibody - Images**



#### **RbBP5 Antibody - Background**

Retinoblastoma binding protein 5 (RbBP5) belongs to a highly conserved subfamily of WD-repeat proteins and it is also a subunit of a human Set1-like histone methyltransferase (HMT) complex. The encoded RbBP 5 protein interacts preferentially with the underphosphorylated retinoblastoma protein via the E1A-binding pocket B