

**Luciferase Antibody**  
**Purified Rabbit Polyclonal Antibody**  
**Catalog # ABV11564****Specification**

---

**Luciferase Antibody - Product Information**

|             |                   |
|-------------|-------------------|
| Application | <b>WB</b>         |
| Host        | <b>Rabbit</b>     |
| Clonality   | <b>Polyclonal</b> |
| Isotype     | <b>Rabbit IgG</b> |

**Luciferase Antibody - Additional Information****Other Names**

Chinese Firefly Luciferase

**Target/Specificity**

Luciferase

**Formulation**

200 µg (0.5 mg/ml) rabbit anti-Luciferase (Chinese firefly) polyclonal antibody in 30% glycerol, 0.5% BSA and 0.01% thimerosal.

**Handling**

The antibody solution should be gently mixed before use.

**Background Descriptions****Precautions**

Luciferase Antibody is for research use only and not for use in diagnostic or therapeutic procedures.

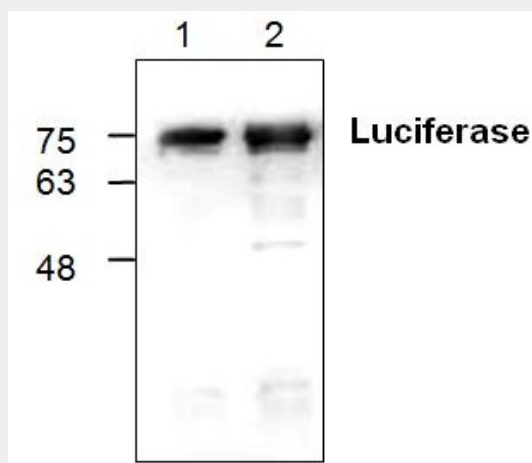
**Luciferase Antibody - Protein Information****Luciferase Antibody - Protocols**

Provided below are standard protocols that you may find useful for product applications.

- [Western Blot](#)
- [Blocking Peptides](#)
- [Dot Blot](#)
- [Immunohistochemistry](#)
- [Immunofluorescence](#)
- [Immunoprecipitation](#)
- [Flow Cytometry](#)

- [Cell Culture](#)

## Luciferase Antibody - Images



Western blot analysis using Firefly Luciferase. Lane1:20ng; Lane2:50ng.

## Luciferase Antibody - Background

The Firefly luciferase is a genetically modified variant derived from the Luciferase of *Diaphanes pectinealis* endemic to Yunnan province, China. It has been modified to provide enhanced stability compared to the normal phenotype of *Photinus pyralis* as well as a broader and more physiologically relevant effective pH range. Luciferase has been used as a sensitive reporter for studying gene regulation and function. Firefly luciferase catalyzes the oxidative carboxylation of luciferin, a reaction with the highest efficiency of any known bioluminescence reaction.